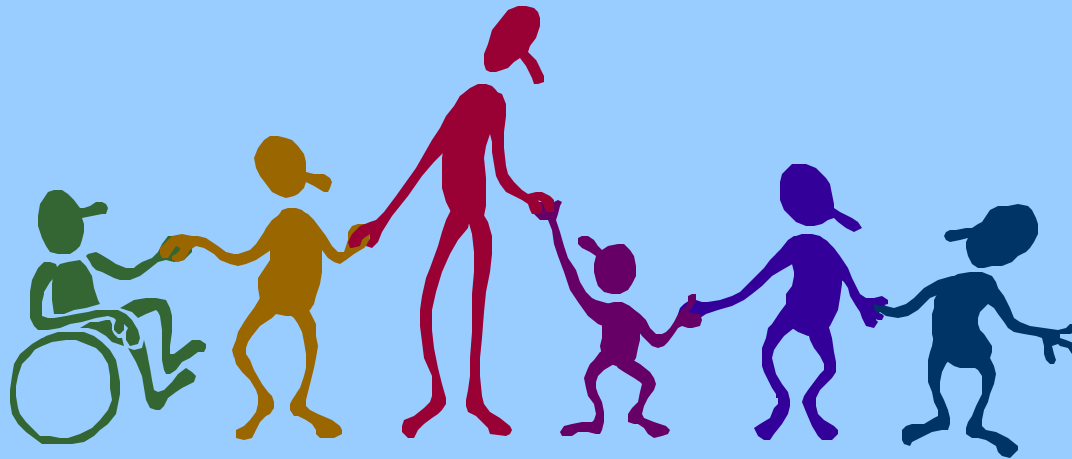


# South Carolina's Public Education System



Presentation by  
State Superintendent of Education  
Inez Tenenbaum

**Plaintiff Exhibit No.  
6612**

# The Department of Education

## Mission Statement

To provide leadership and services to ensure a system of public education through which all students will become educated, responsible and contributing citizens

## Strategic Aims

- High Student Achievement
- Teacher Quality
- Early Childhood Education
- Parental and Community Partnerships
- Safe and Healthy Schools
- Education Leadership

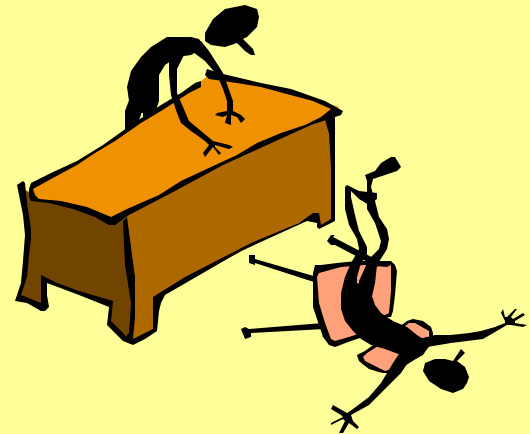
**Plaintiff Exhibit No.  
6612A**

# Statutory Duties - State

- Education Finance Act
- Education Improvement Act
- Early Child Development and Academic Assistance Act
- School to Work Transition Act
- Charter Schools Act
- Education Accountability Act
  - Statewide Assessment Program
  - School Report Cards
  - Intervention and Assistance
- Public School Facilities Inspections and Assistance/Bonds Act
- School Safety Coordinators (Resource Officers)
- Parental Involvement in Their Children's Education Act
- Technology Competencies for Teachers and for Students

# Statutory Duties - State

- Preschool Program for Children with Disabilities
- Driver Safety
- Assisting, Developing, and Evaluating Professional Teachers
- Instructional Materials Adoption
- Comprehensive Health Education Act
- Adult Education
- Transportation of Pupils
- School Leadership
  - Principal Induction Program
  - Principal Evaluation Program
  - Leadership Executive Institute
- Alternative Schools Program
- Arts in Education Program
- Professional Development on Standards



**Plaintiff Exhibit No.  
6612C**

# Statutory Duties - State

- Teacher Quality Act
  - Qualifications of Teachers
  - FBI Fingerprint Review
  - Certification Records
  - Revocation and Suspension of Certificates
  - Teacher Training Institutes
  - Teacher Technology Proficiency
- African-American History Program
- Accreditation
- College Freshman Report
- Programs for Talented Students
- Advanced Placement
- SAT Improvement Program
- Reading Recovery
- Governor's Institute for Reading

## **EOC Statutes Based Funding Model**

**Funding Gap  
\$ 755 M**

**Plaintiff's Exhibit 253  
Progress Report on the Study of Sufficient  
Funding**

**Plaintiff Exhibit No.  
6612D**

# Statutory Duties - Federal

- Individuals with Disabilities Education Act
  - Rehabilitation Act (Section 504)
- Preschool Programs for Children with Disabilities
- Higher Education Report Card  
(teacher preparation programs)
- No Child Left Behind Act
  - Title I (Academic Achievement of the Disadvantaged)
  - Teacher Quality
    - Teacher Preparation Programs
    - Teacher Qualifications
    - Professional Development
  - Migrant Education
  - Homeless Education
  - Limited English Proficient
  - Accountability



**Plaintiff Exhibit No.  
6612E**

# Statutory Duties - Federal

- Carl D. Perkins Vocational-Technical Act
- School Lunch Program
  - School Breakfast Program
- Child Care and Development Block Grant
- Single Audit Act
- Robert Byrd Scholarships
- US Senate Scholarships
- McKinney-Vento Homeless Assistance Act
- AmeriCorp Program

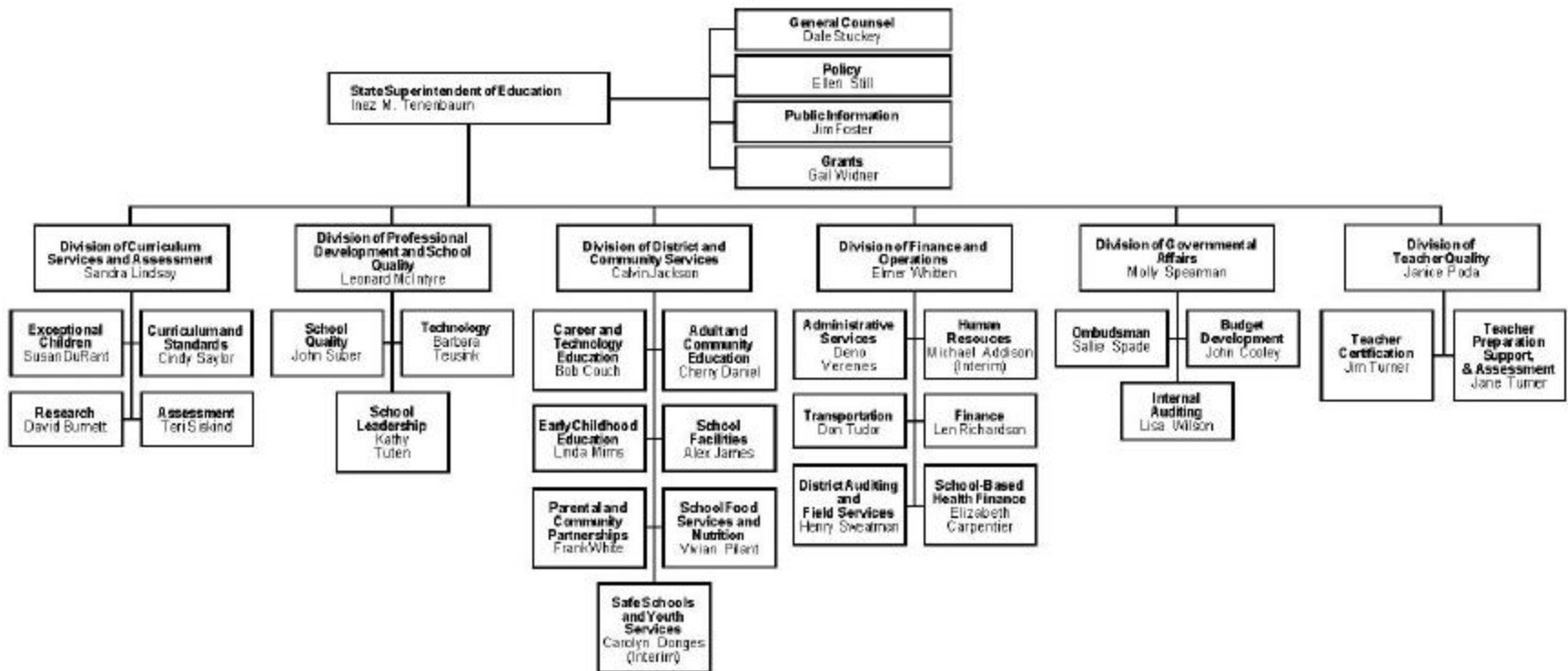
**Represents 9% of  
Budget**

**Not All Are Fully  
Funded**

**Plaintiff Exhibit No.  
6612F**

# South Carolina Department of Education

## South Carolina Department of Education



**Plaintiff Exhibit No.  
6612G**



# Who are we talking about?



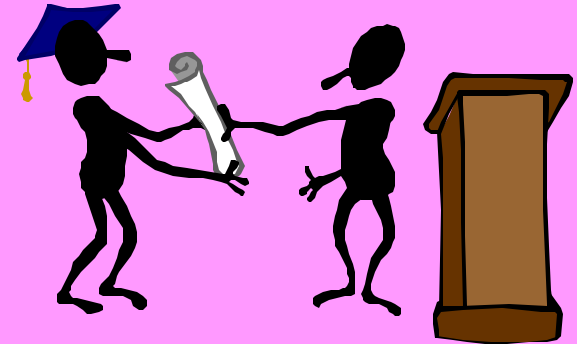
## SC's Students

- 680,000
  - 18, 294 or 2.69% - 8 Plaintiff Districts
- Almost half are eligible for free or reduced-price lunch
  - 81.76% of 8 Plaintiff Districts are on free or reduced-price lunch (2002 Education Profiles)
- 15% have disabilities
- 8,000+ are limited English proficient (50 languages)
- 30% single-parent family
- 20% no health coverage
- 1 in 5 children are born to a mother without a high school diploma
- 42<sup>nd</sup> – national ranking of overall child well-being for SC (Kids Count – ranking has been as low as 47<sup>th</sup>)

# Who are we talking about?

## SC's Schools

- 85 Districts
  - From 900 pupils to 59,000
- 8 Plaintiff Districts
  - From 905 pupils to 3,681
- 1,121 schools
  - From 27 pupils to 3,130
- 37 schools (8 Plaintiff Districts)
  - From 176 pupils to 1,016
- State EFA support to the districts ranges from 24% to 92%



**Plaintiff Exhibit No.  
6612I**

**South Carolina Demographic Statistics  
Measures of Child Well-Being  
2000 Census Data**

**Plaintiff Exhibit No.  
6612J**

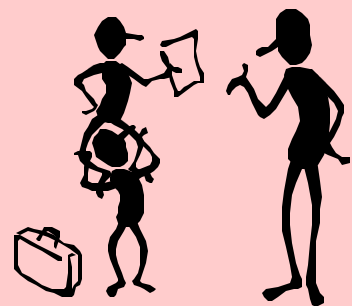
Measure		African-American	Non-Hispanic White
Children ages 6 – 17 Years		259,282	399,219
% children in poverty, 1999		33.7%	9.2%
Number of children ages 6-17 years in poverty		87,378	36,728
Median family income, 1999		\$28,742	\$50,794
	% children in neighborhoods where more than 32.2% of families are female-headed, no spouse	50.5%	13.3%
	% children in neighborhoods with more than 18.6% persons in poverty	47.5%	13.0%
	% children in neighborhoods where more than 14.7% of persons 16-19 are high school dropouts	36.0%	30.4%
	% children in neighborhoods where more than 38.1% of working age men are unemployed	22.8%	4.7%
	% children with all four characteristics	9.9%	1.1%
% children (Pre-K – 12) in public school		95.9%	82.0%
% children (Pre-K – 12) in private school		4.1%	18.0%

Source: Kids Count, 2003



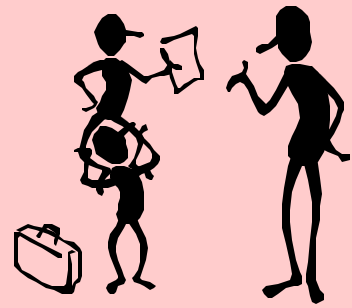
# Overview of State Department of Education -- Responsibilities and Services

- Instructional Support
- Technical Assistance and Monitoring
- Assessment and Accountability
- Teacher Certification
- Operational Support



# Instructional Support

- Oversee educational programs for students from the age of "3 to 83"
  - from 3-year-old kindergarten to adult education
- Set program standards and provide assistance in such diverse areas as family literacy, safe school plans, career and technology, and charter schools
- Offer curriculum support, materials and training on all subject areas and in numerous programs, strategies, and techniques such as programs for students with severe disabilities, gifted and talented, and character education



# Instructional Support

8 Plaintiff Districts –  
Gifted & Talented Program (2003)

**Allendale – 3.8%**

**Dillon 2 – 5.4%**

**Florence 4 – 5.8%**

**Hampton 2 – N/A**

**Jasper – 3.5%**

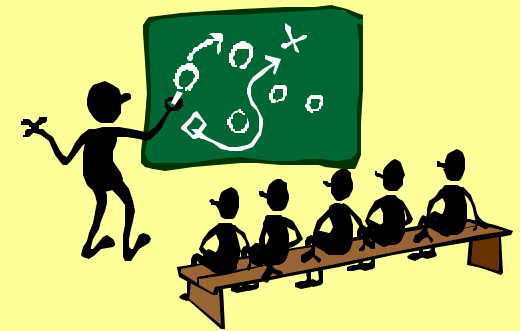
**Lee – 2.3%**

**Marion 7 – 5.2%**

**Orangeburg 3 – 6.9%**

**Plaintiff Exhibit No.  
6612M**

# Technical Assistance and Monitoring



- Provide technical assistance for state and federal programs. Also monitor such programs as Title I, teacher evaluation, limited English-proficient students, Advanced Placement, Reading First and the Reading Initiative, half-day program for four-year-olds, safe schools, after-school programs, school resource officers, guidance, truancy prevention, GED testing program
- Provide technical assistance to an average of 50 schools identified as unsatisfactory by the EAA criteria. Will soon add schools identified under NCLB
  - **5 of 8 Plaintiff Districts Rated UNSATISFACTORY (2003)**
- Train review teams and conduct external reviews of unsatisfactory-ranked schools and over 200 audits of schools ranked below average
  - **3 of 8 Plaintiff Districts Rated BELOW AVERAGE (2003)**



# Assessment and Accountability

- Develop and maintain the student assessment system
  - PACT, High School Exit Exam  
(200 test forms and 900 items annually)
  - Also Terra Nova, Readiness, NAEP, End-of-Course tests
- Collect the data, prepare the reports, and distribute some 1,200 different school and district report cards (1.3 million copies)
- Maintain the data collection systems for EAA, NCLB, and other mandated reporting

**Plaintiff Exhibit No.  
66120**



# Teacher Quality

- Set standards for and certify all educational personnel

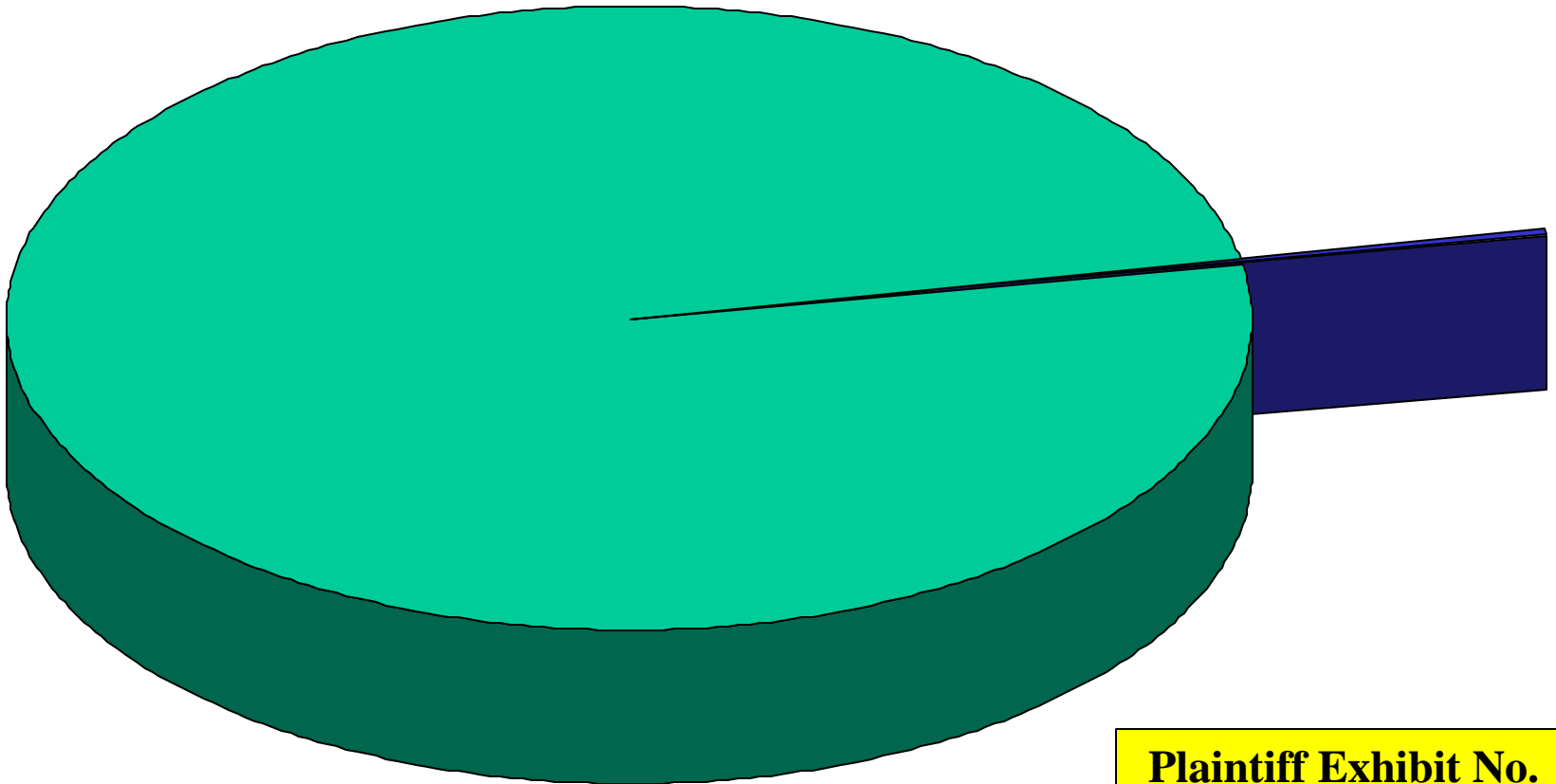
Processed 67,000 certification transactions last year. Handled 38,000 calls, received 150 e-mail inquiries a day and received 2,600 requests by regular mail per week.

- Investigate and and conduct teacher certification hearings for suspensions and revocations

Last two years, 165 hearings, 105 revocations or suspensions

# Teacher Quality

105 Revocations or Suspension  
Out of 46,000 Teachers (0.22%)



**Plaintiff Exhibit No.  
6612Q**

# Teacher Quality

- Set standards for and certify all educational personnel  
Processed 67,000 certification transactions last year. Handled 38,000 calls, received 150 e-mail inquiries a day and received 2,600 requests by regular mail per week.
- Investigate and and conduct teacher certification hearings for suspensions and revocations  
Last two years, 165 hearings, 105 revocations or suspensions
- Oversee the alternative certification programs, PACE and Troops to Teachers
- Accredite the 32 teacher preparation programs
- Collect data for the Higher Education Report Card and NCLB

# Operational Support

- Oversee the statewide student transportation system of more than 5,600 school buses operating 78 million miles a year. (Maintained a 99.5 percent operating efficiency although the average age of the vehicles is 11 years)
- Handle the financial transactions involving almost half the state's budget, the 85 school districts, the two Governor's Schools, and First Steps. Complete over 70,000 transactions annually.
- Administer and inspect the free/reduced lunch program (73 million lunches and 30 million breakfasts)
- Approve and inspect new school facilities
- Audit districts' compliance to financial requirements, provide grant writing training, train new and experienced school leaders
- Staff the State Board of Education and carry out the policies of the board.



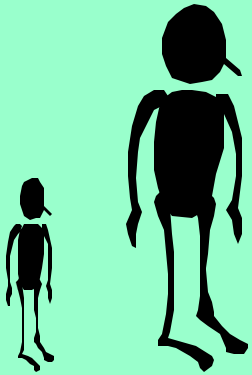
# History of Agency FTEs

**Plaintiff Exhibit No.  
6612T**

Year	Agency State FTE	Agency EIA FTE	Agency FED/Other FTE	Agency Total FTE	Other Entity State FTE	Other Entity FED/Other FTE	Other Entity Total FTE	Total State FTE	Total EIA FTE	Total FED/Other FTE	Total FTE
1991	886	81	198	1,165	23	1	24	909	81	199	1,189
1992	821	71	196	1,088	24	1	25	845	71	197	1,113
1993	819	71	191	1,081	24	1	25	843	71	192	1,106
1994	775	72	201	1,048	24	1	25	799	72	202	1,073
1995	775	72	201	1,048	25	1	26	800	71	202	1,074
1996	775	72	201	1,048	25	1	26	800	72	202	1,074
1997	750	58	162	970	25	1	26	775	58	163	996
1998	732	57	141	930	39	1	40	771	57	142	970
1999	731	54	130	915	85	1	86	816	54	131	1,001
2000	743	55	124	922	100	3	103	843	55	127	1,025
2001	768	64	138	970	108	13	121	876	64	151	1,091
2002	772	77	147	996	108	13	121	880	77	160	1,117
2003	772	77	147	996	108	17	125	880	77	164	1,121
2004	763	77	160	1,000	108	21	129	871	77	181	1,129
Change 1991–2004	-123	-4	-38	-165	+85	+20	+105	-38	-4	-18	-60

Agency FTEs include bus shop personnel – 464 FTE

Note: The “Other Entity” designation includes the Governor’s School for Math and Science, the Governor’s School for Arts and Humanities, and First Steps.



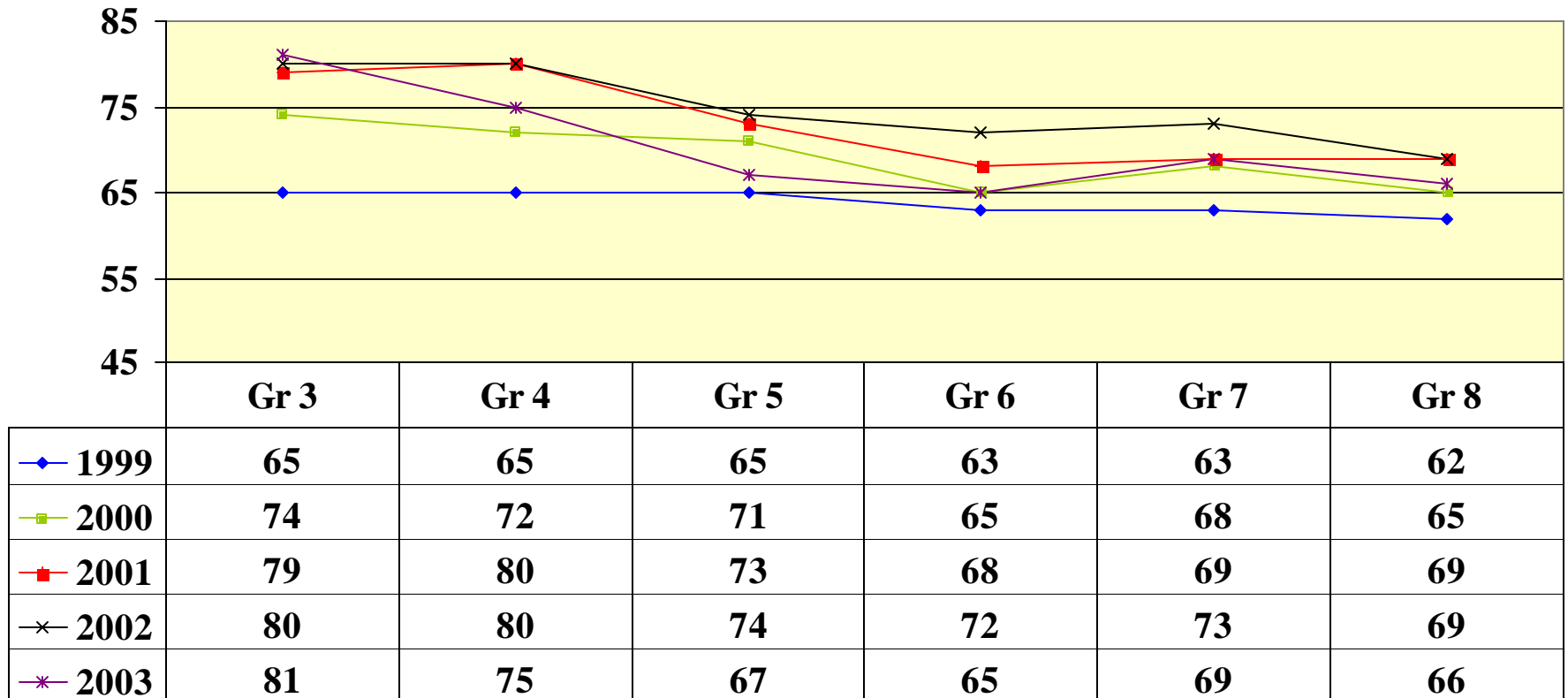
# Putting Performance in Perspective

- The South Carolina PACT performance standards are among the “most stringent” in the nation
  - The proficiency standards are rated 2<sup>nd</sup> highest in fourth grade and 4<sup>th</sup> in eighth grade in a review of 33 states (American Institutes of Research)
- State’s standards and accountability are ranked 7<sup>th</sup> in the nation in Education Week’s Quality Counts

# Statewide

## PACT English Language Arts 1999-2003

### Percentage of Students Scoring Basic and Above

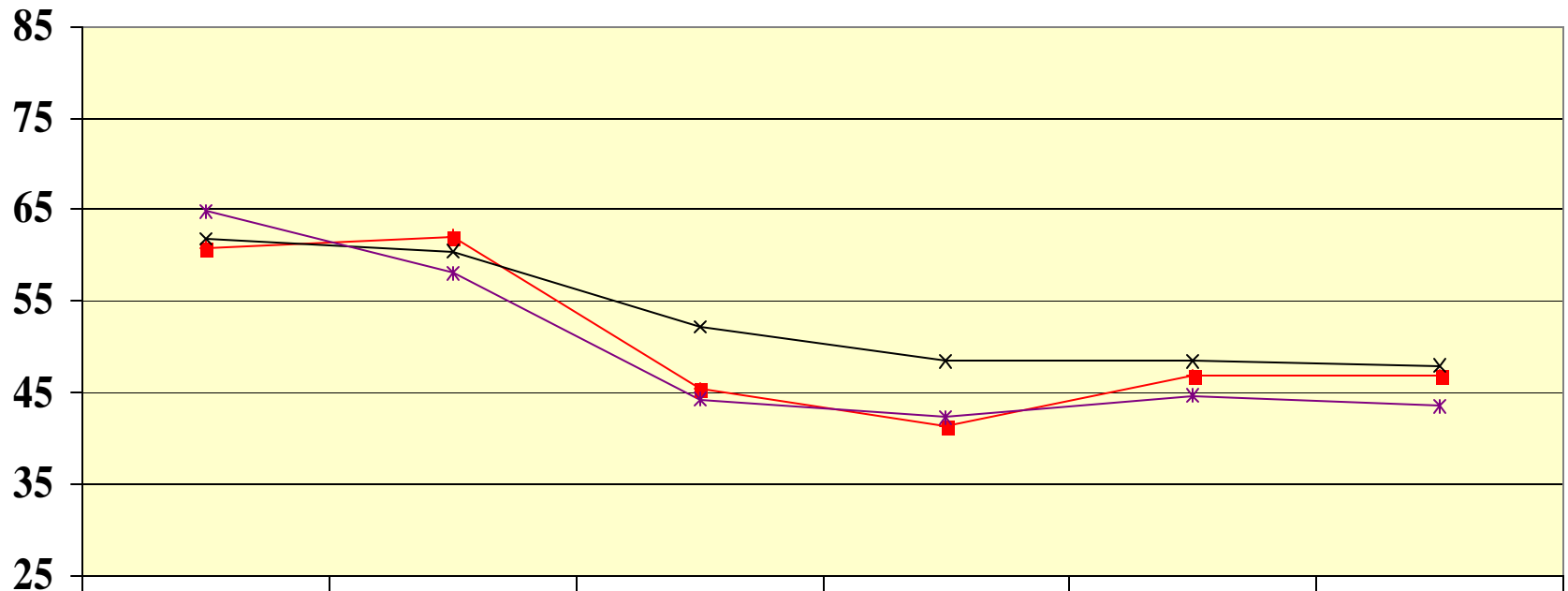


**Plaintiff Exhibit No.  
6612W**

# 8 Plaintiff Districts

## PACT English Language Arts 2001-2003

### Percentage of Students Scoring Basic and Above



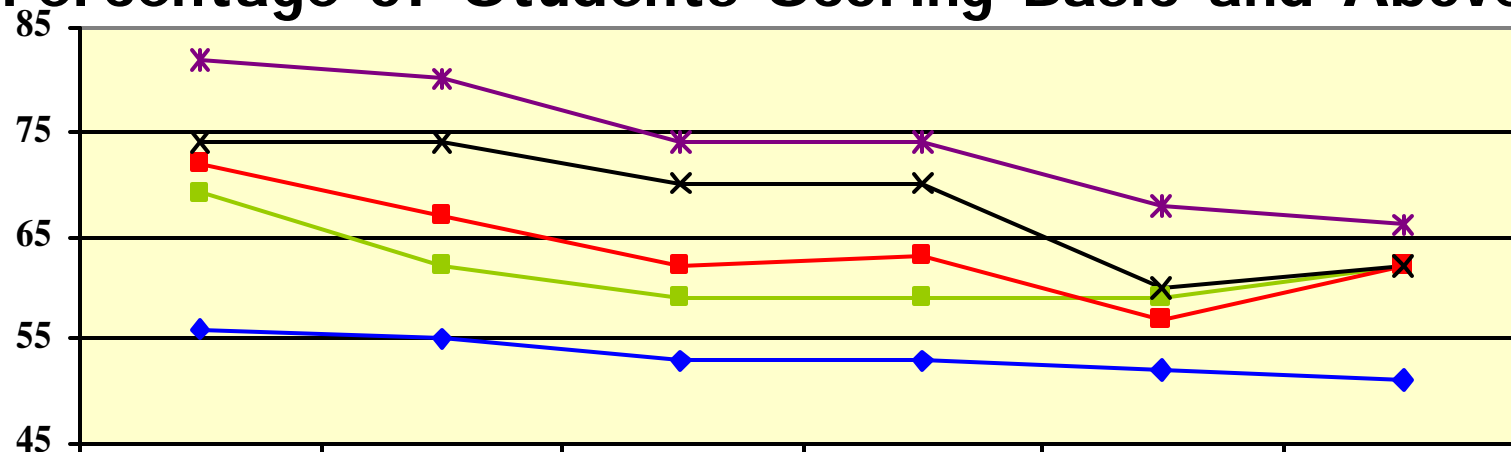
	Gr 3	Gr 4	Gr 5	Gr 6	Gr 7	Gr 8
2001	60.8	62.1	45.5	41.3	46.8	46.8
2002	61.7	60.3	52.3	48.5	48.5	47.9
2003	64.9	58.0	44.3	42.4	44.6	43.6



# Statewide

## PACT Mathematics 1999-2003

### Percentage of Students Scoring Basic and Above



	Gr 3	Gr 4	Gr 5	Gr 6	Gr 7	Gr 8
◆ 1999	56	55	53	53	52	51
■ 2000	69	62	59	59	59	62
■ 2001	72	67	62	63	57	62
✕ 2002	74	74	70	70	60	62
✱ 2003	82	80	74	74	68	66

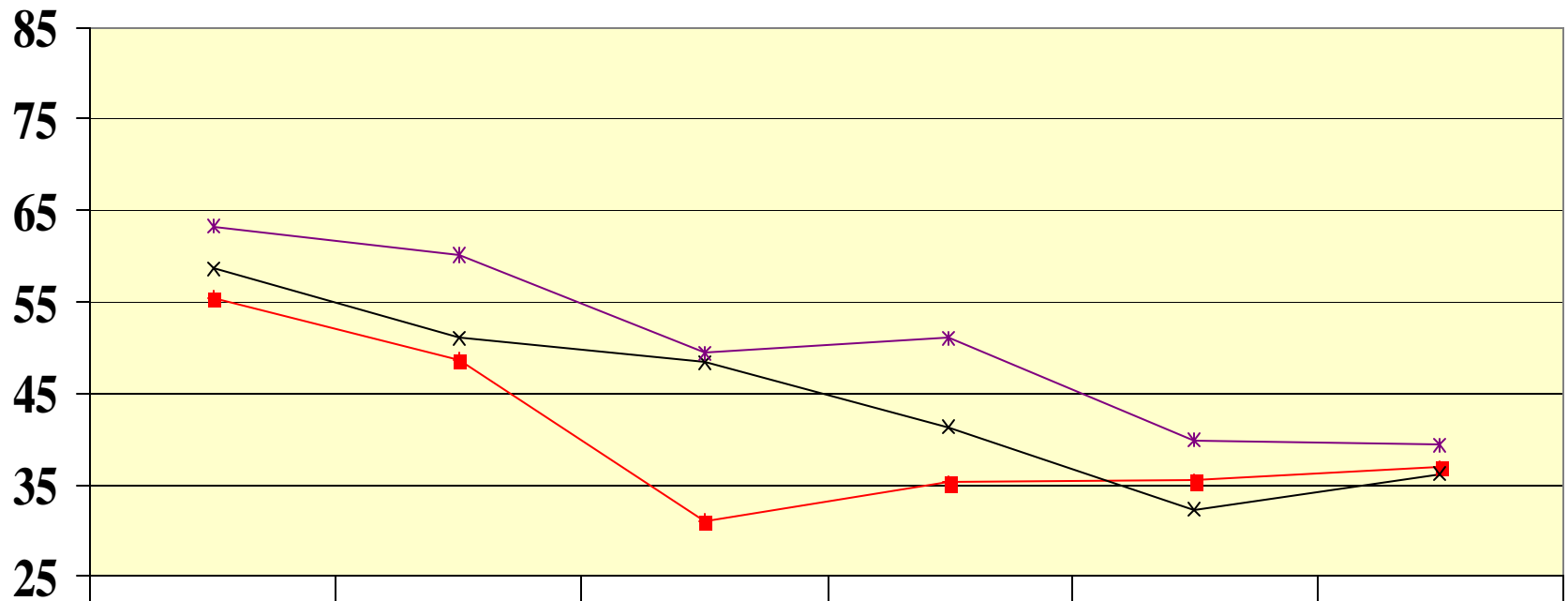
**Plaintiff Exhibit No.  
6612Y**

# 8 Plaintiff Districts

## PACT Mathematics 2001-2003

Percentage of Students Scoring Basic

**Plaintiff Exhibit No.  
6612Z**



■ 2001	Gr 3	Gr 4	Gr 5	Gr 6	Gr 7	Gr 8
✕ 2002	55.5	48.7	31.2	35.3	35.5	37
* 2003	58.6	51.1	48.4	41.3	32.4	36.2
	63.4	60.2	49.5	51.1	40	39.3

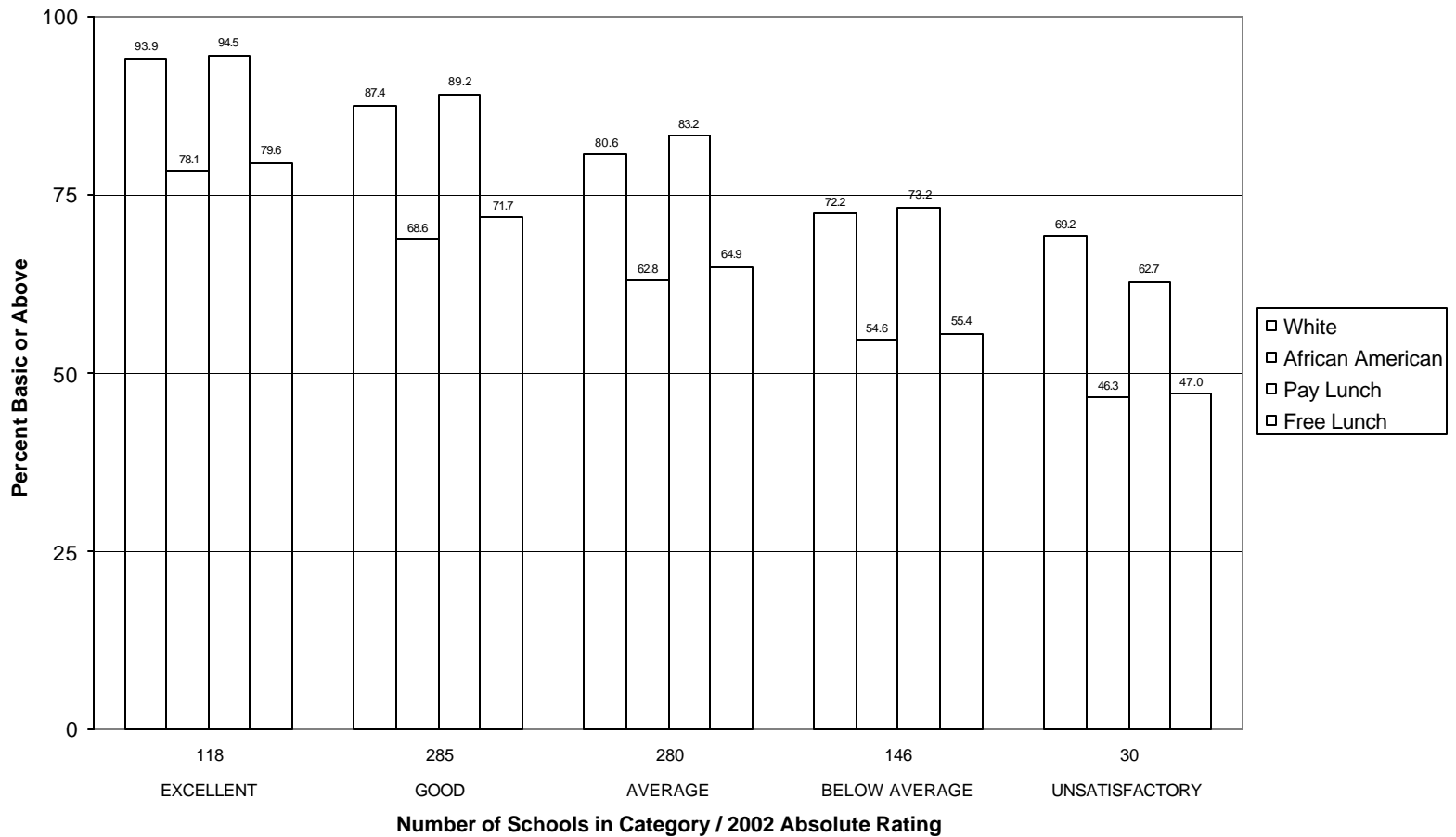
# State Wide Trend Analysis of Achievement Gaps

1999 and 2001 PACT

Target Group And the Comparison Group	ELA Achievement Gaps					Math Achievement Gaps			
	% Basic or above		% Proficient or Advanced			% Basic or above		% Proficient or Advanced	
	1999	2001	1999	2001		1999	2001	1999	2001
African-American to White	-29.8	-25.4	-24.8	-28.0		-35.5	-29.7	-18.0	-25.5
Free/Reduced Lunch to Pay Lunch	-29.9	-24.5	-26.1	-29.1		-33.1	-27.3	-20.5	-25.4

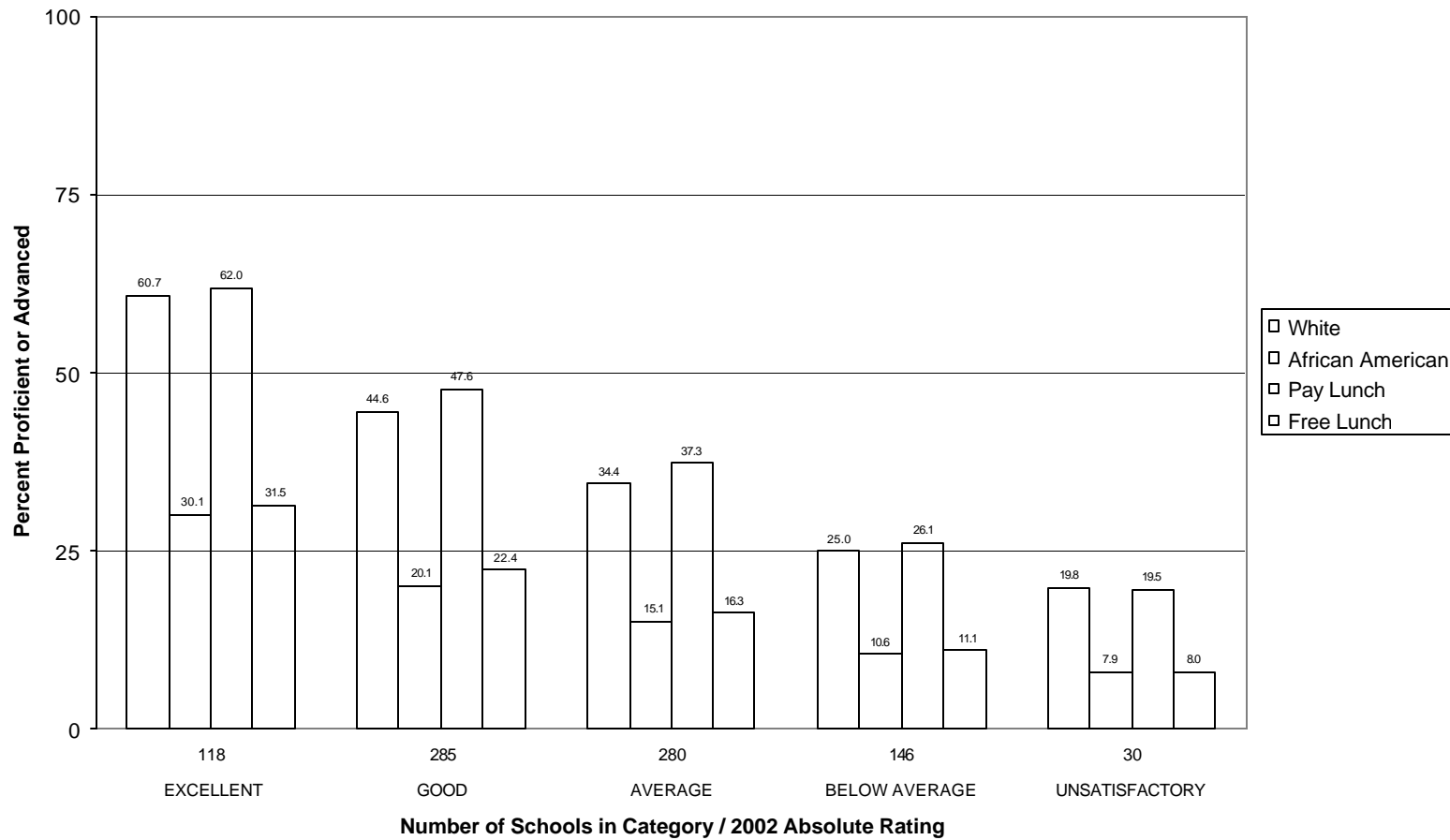
**Plaintiff Exhibit No.  
6612BB**

**Figure 8: 2002 PACT English/Language Arts - Percent Basic or Above by Rating**



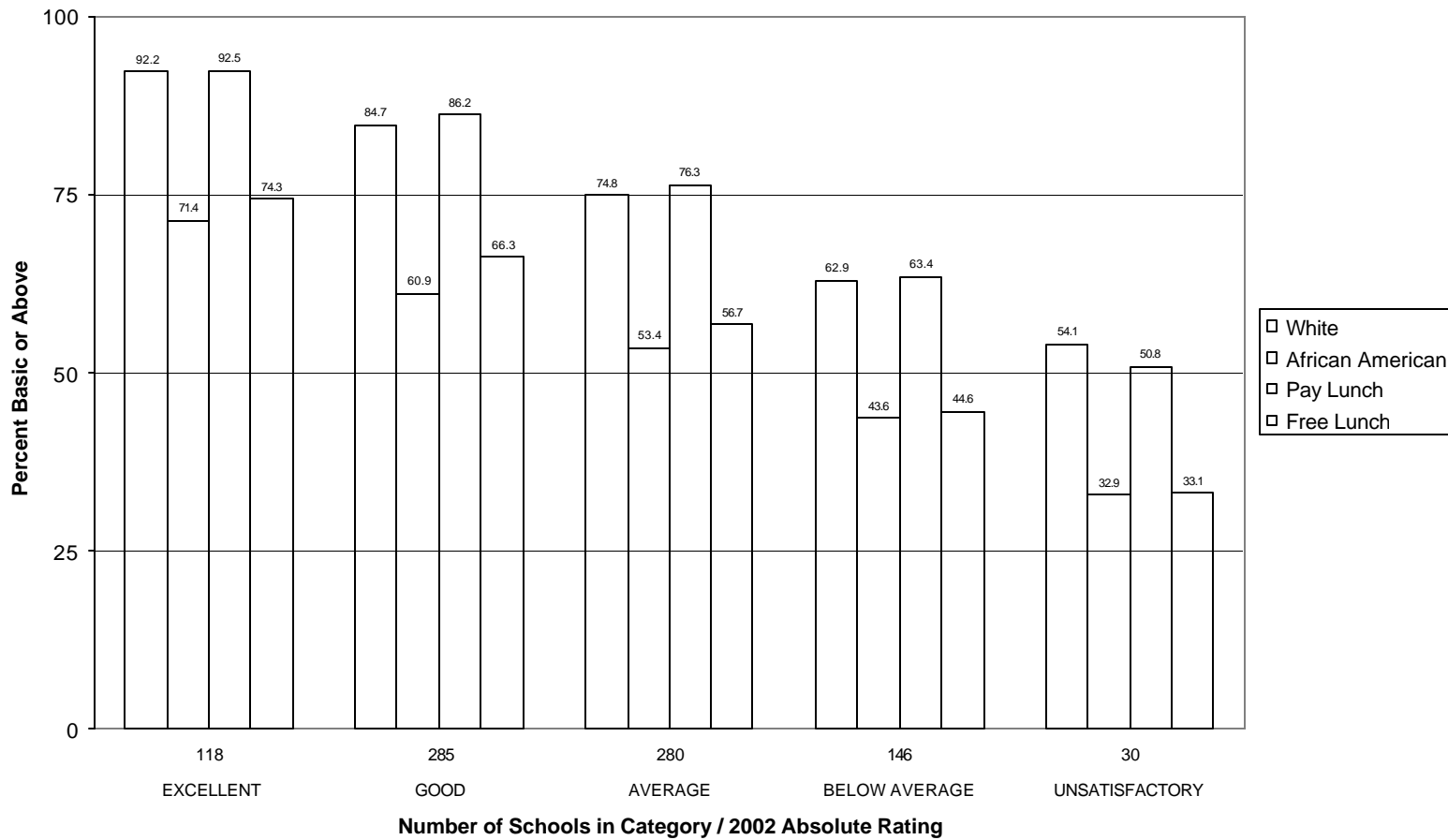
**Plaintiff Exhibit No.  
6612CC**

**Figure 9: 2002 PACT English/Language Arts - Percent Proficient or Advanced by Rating**



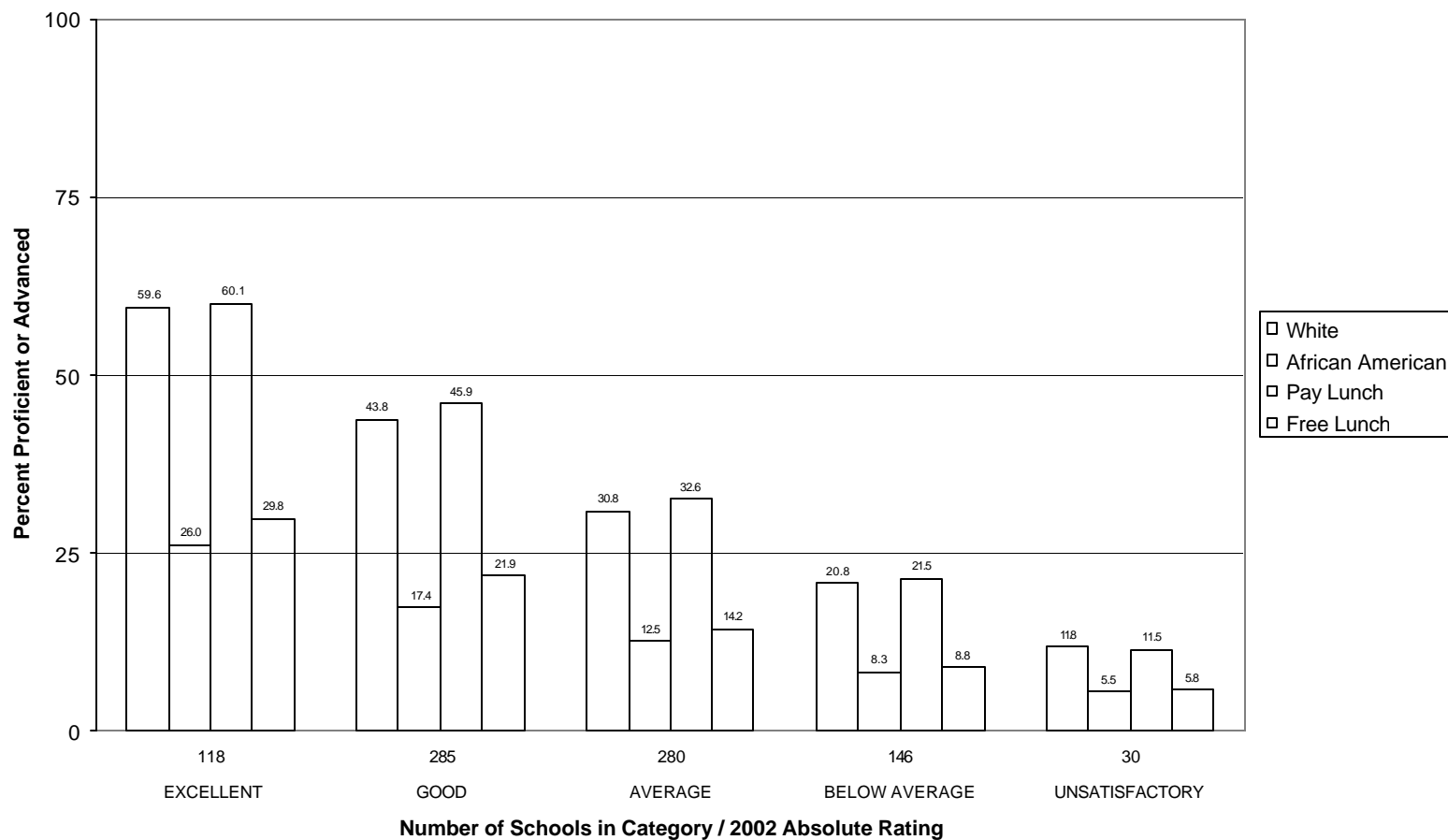
**Plaintiff Exhibit No.  
6612DD**

**Figure 10: 2002 PACT Math - Percent Basic or Above by Rating**



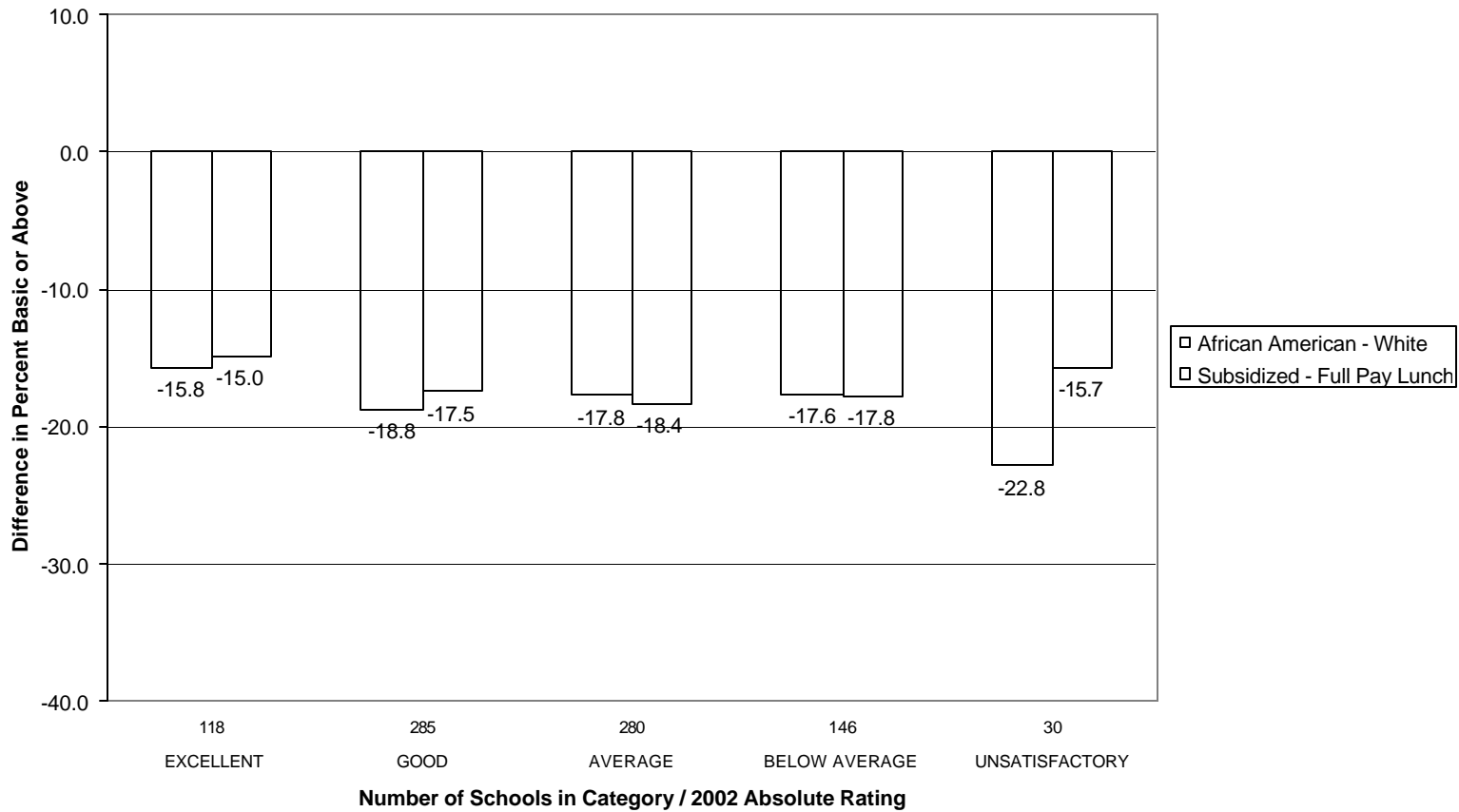
**Plaintiff Exhibit No.  
6612EE**

**Figure 11: 2002 PACT Math - Percent Proficient or Advanced by Rating**



**Plaintiff Exhibit No.  
6612FF**

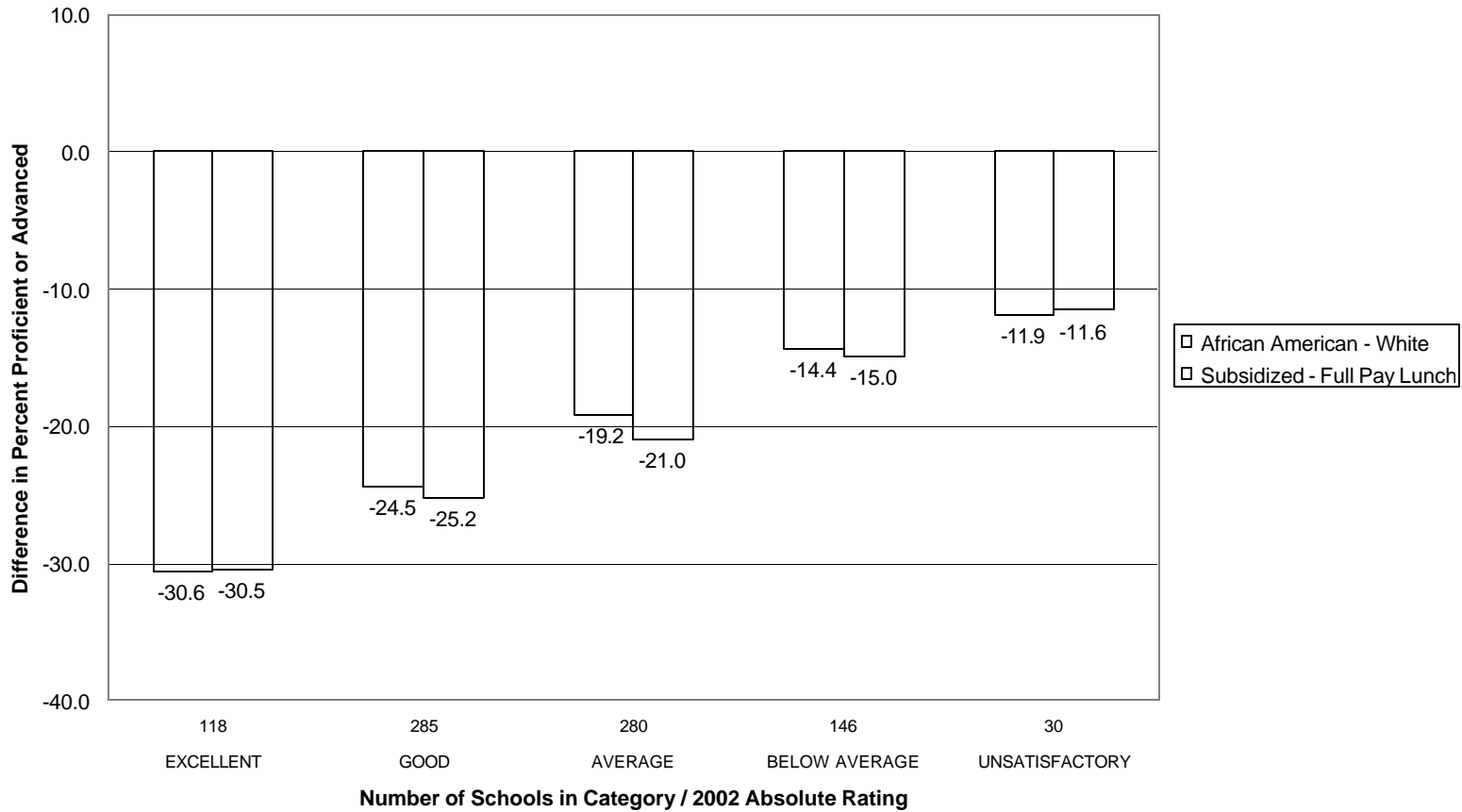
**Figure 12: 2002 PACT English/Language Arts  
Gap in Percent Basic or Above**



**Plaintiff Exhibit No.  
6612GG**

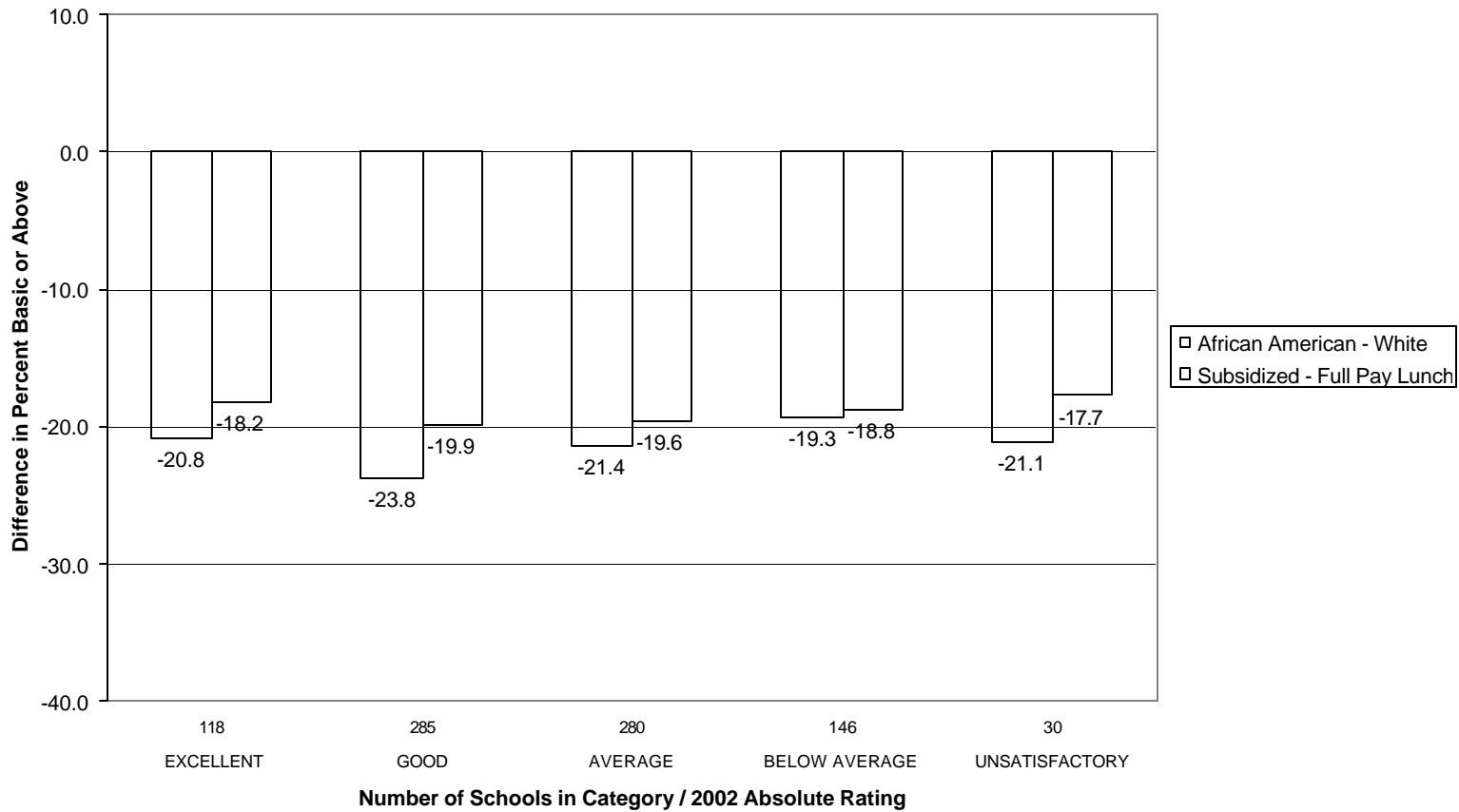


**Figure 13: 2002 PACT English/Language Arts  
Gap in Percent Proficient or Advanced**



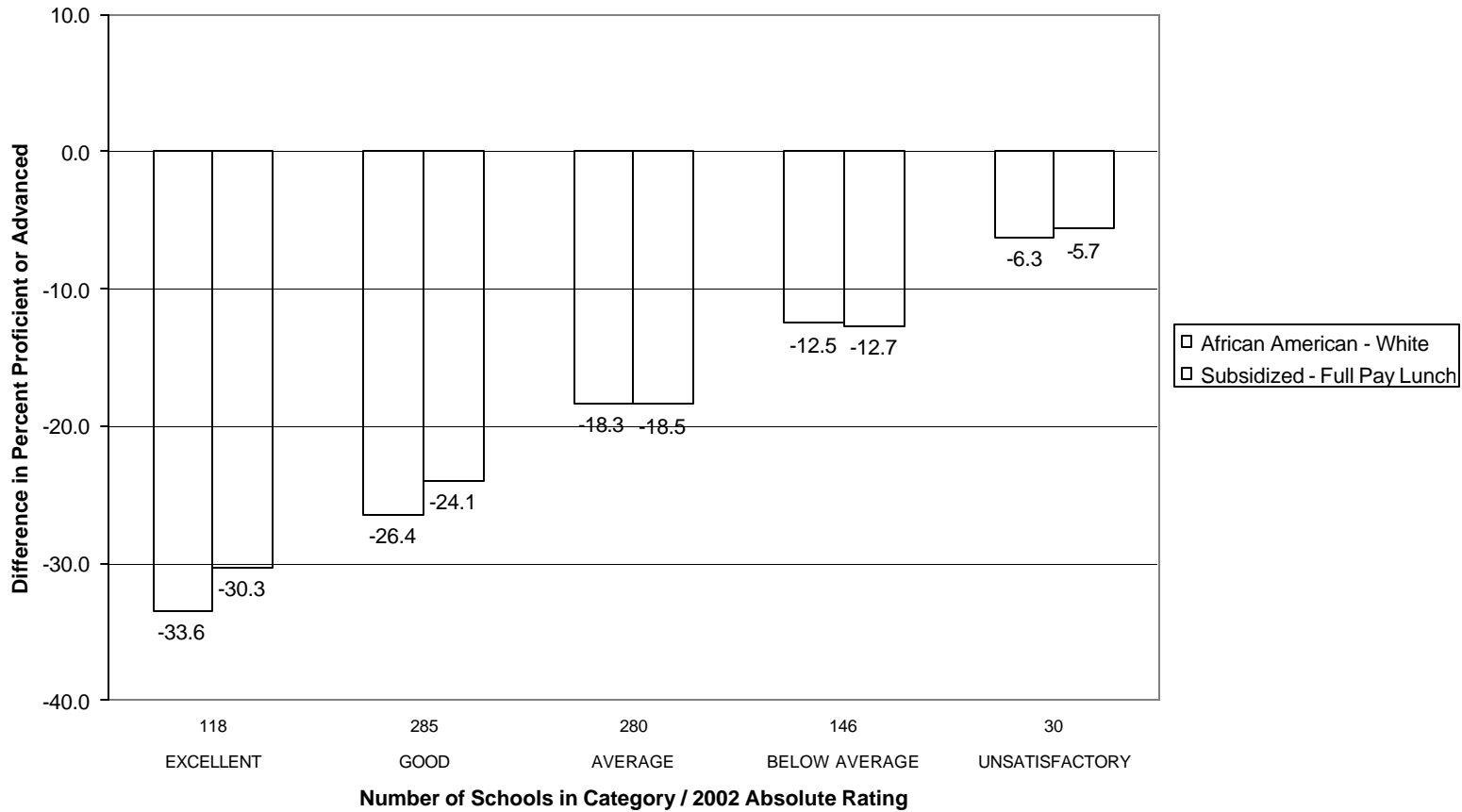
**Plaintiff Exhibit No.  
6612HH**

**Figure 14: 2002 PACT - Math  
Gap in Percent Basic or Above**



**Plaintiff Exhibit No.  
6612II**

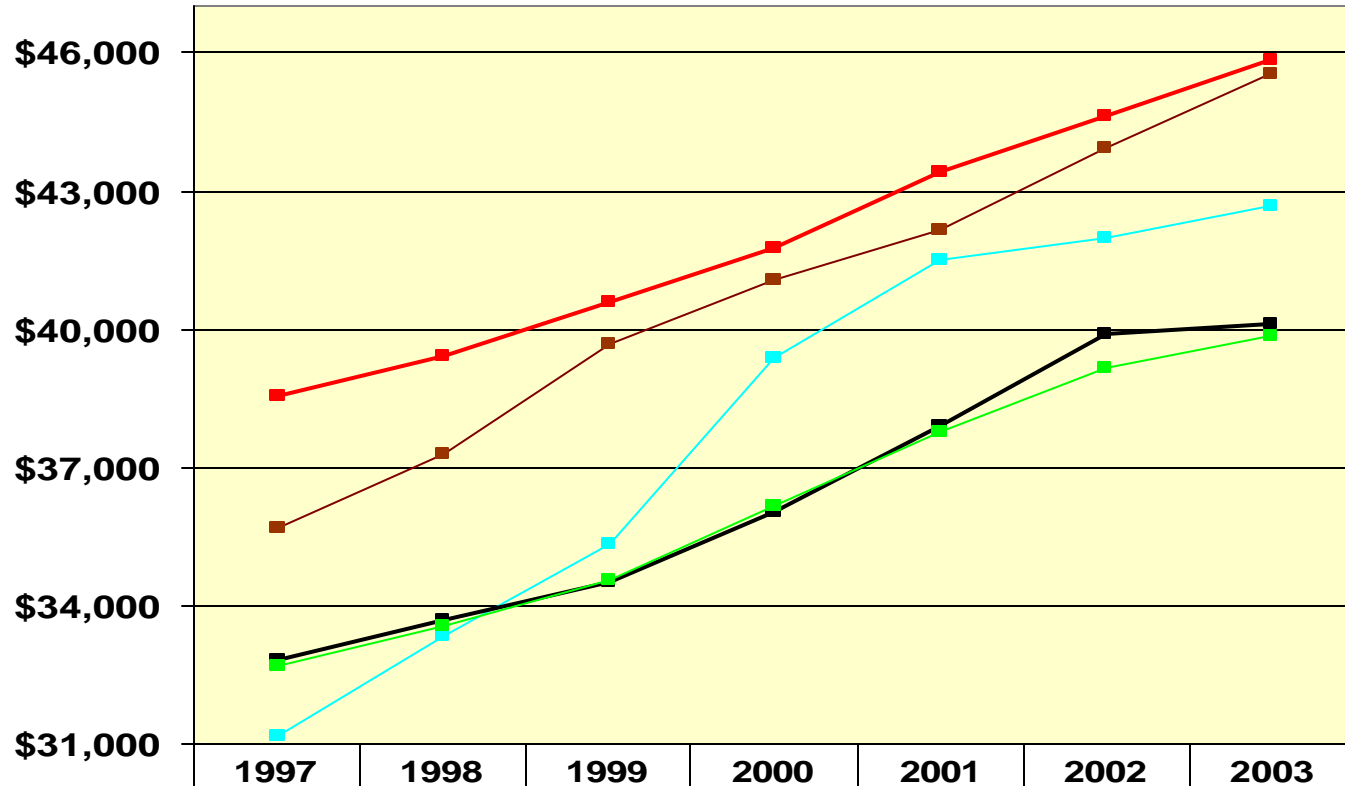
**Figure 15: 2002 PACT Math  
Gap in Percent Proficient or Advanced**



**Plaintiff Exhibit No.  
6612JJ**

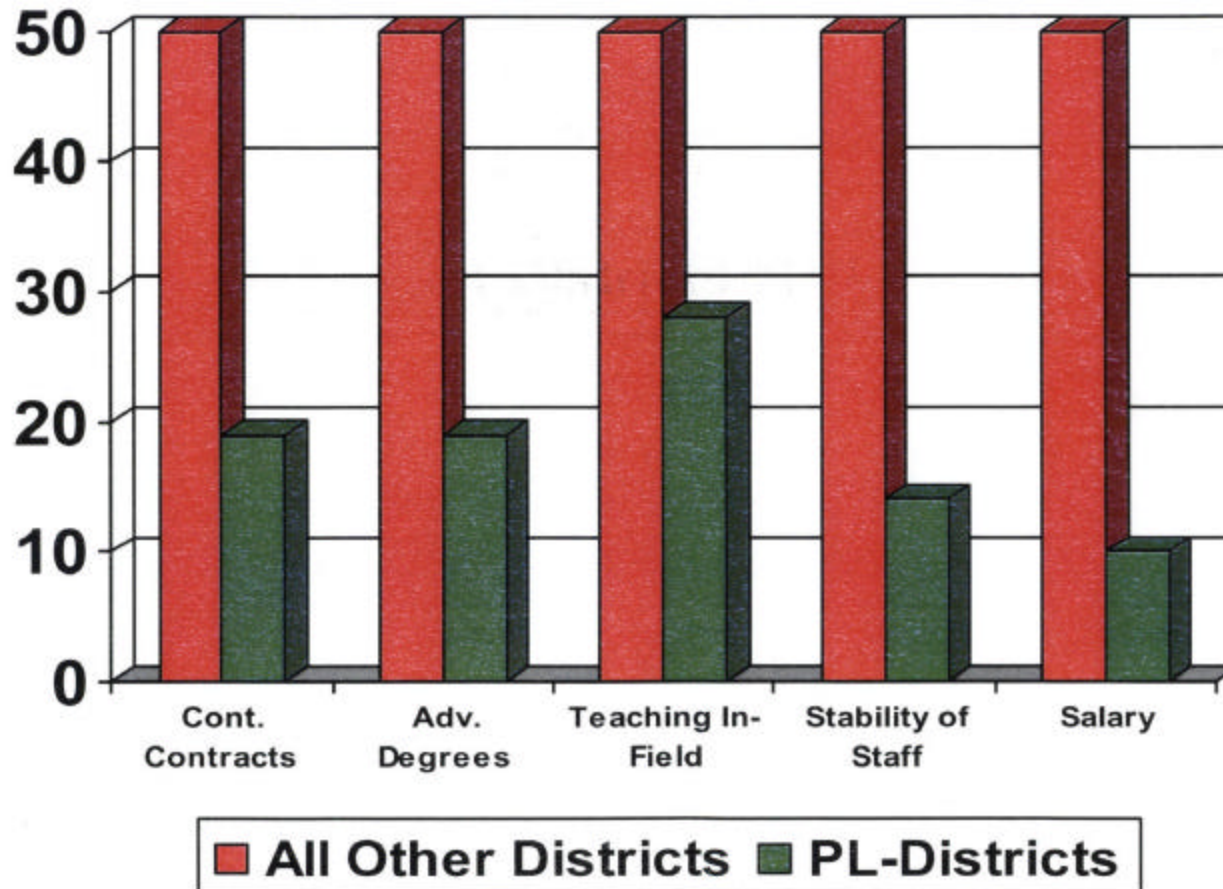
# Teacher Salaries

**Plaintiff Exhibit No.  
6612KK**

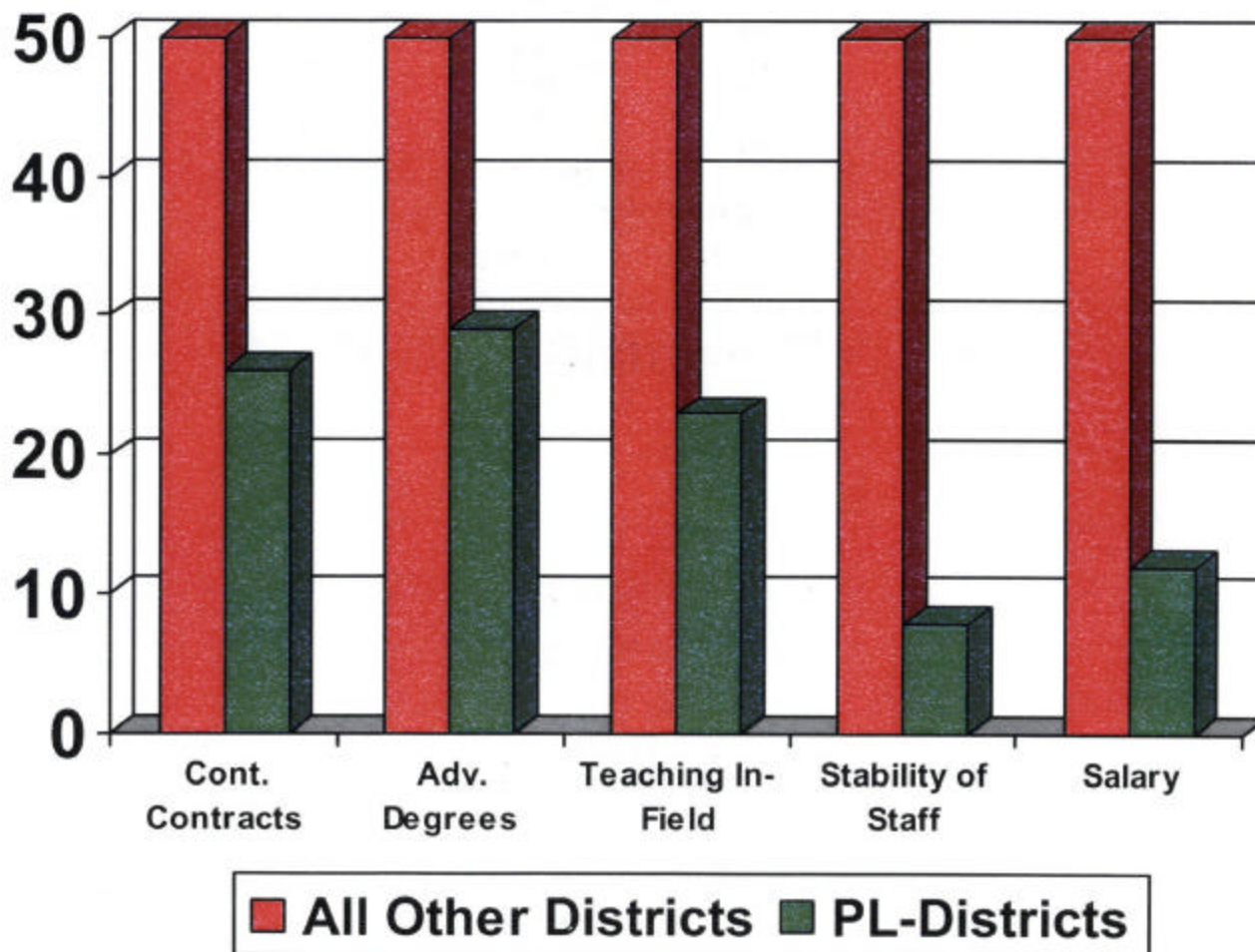


—■— National Average	\$38,554	\$39,454	\$40,580	\$41,754	\$43,400	\$44,604	\$45,822
—■— GA Average	\$35,678	\$37,318	\$39,671	\$41,058	\$42,141	\$43,933	\$45,533
—■— NC Average	\$31,167	\$33,315	\$35,314	\$39,404	\$41,496	\$41,991	\$42,673
—■— SC Average	\$32,830	\$33,697	\$34,506	\$36,081	\$37,938	\$39,923	\$40,124
—■— Proviso Average	\$32,668	\$33,547	\$34,565	\$36,194	\$37,772	\$39,166	\$39,851

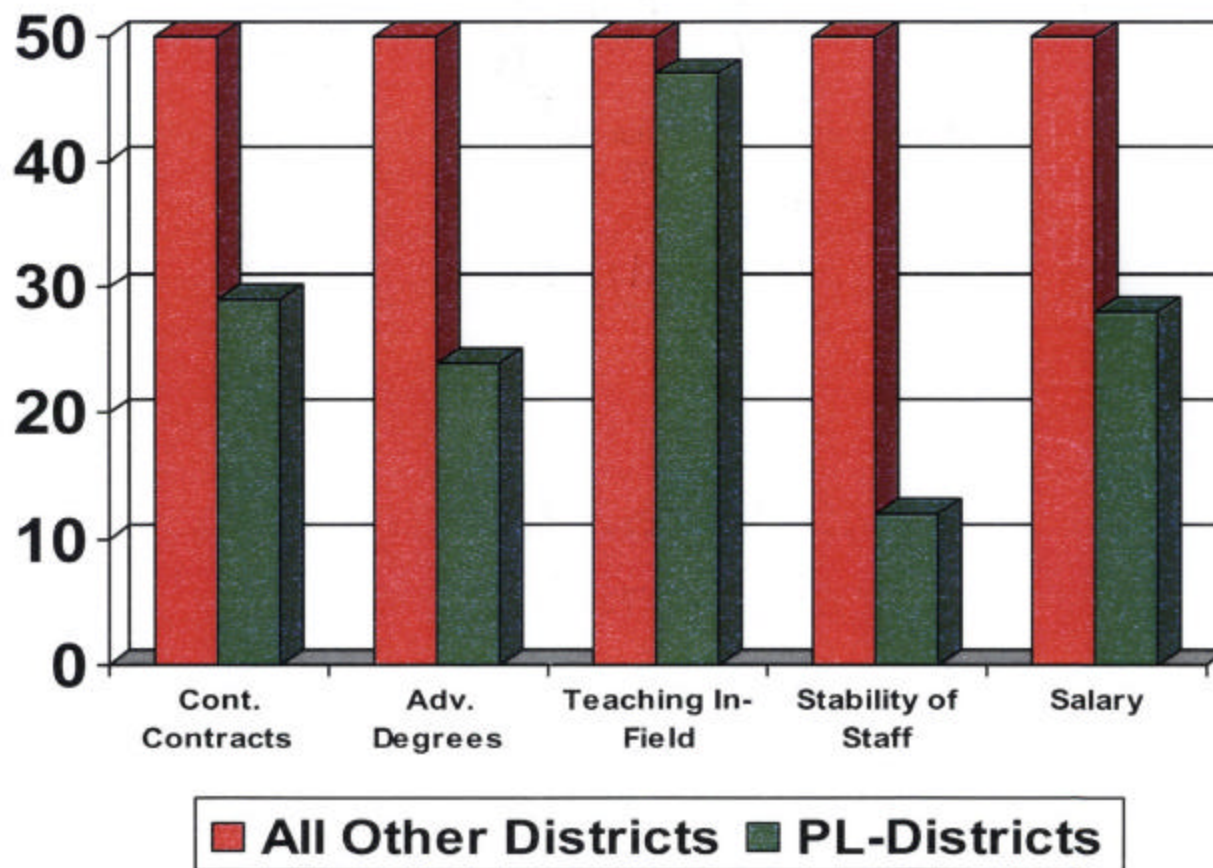
# Elementary School Teachers by Percentile



## Middle School Teachers by Percentile

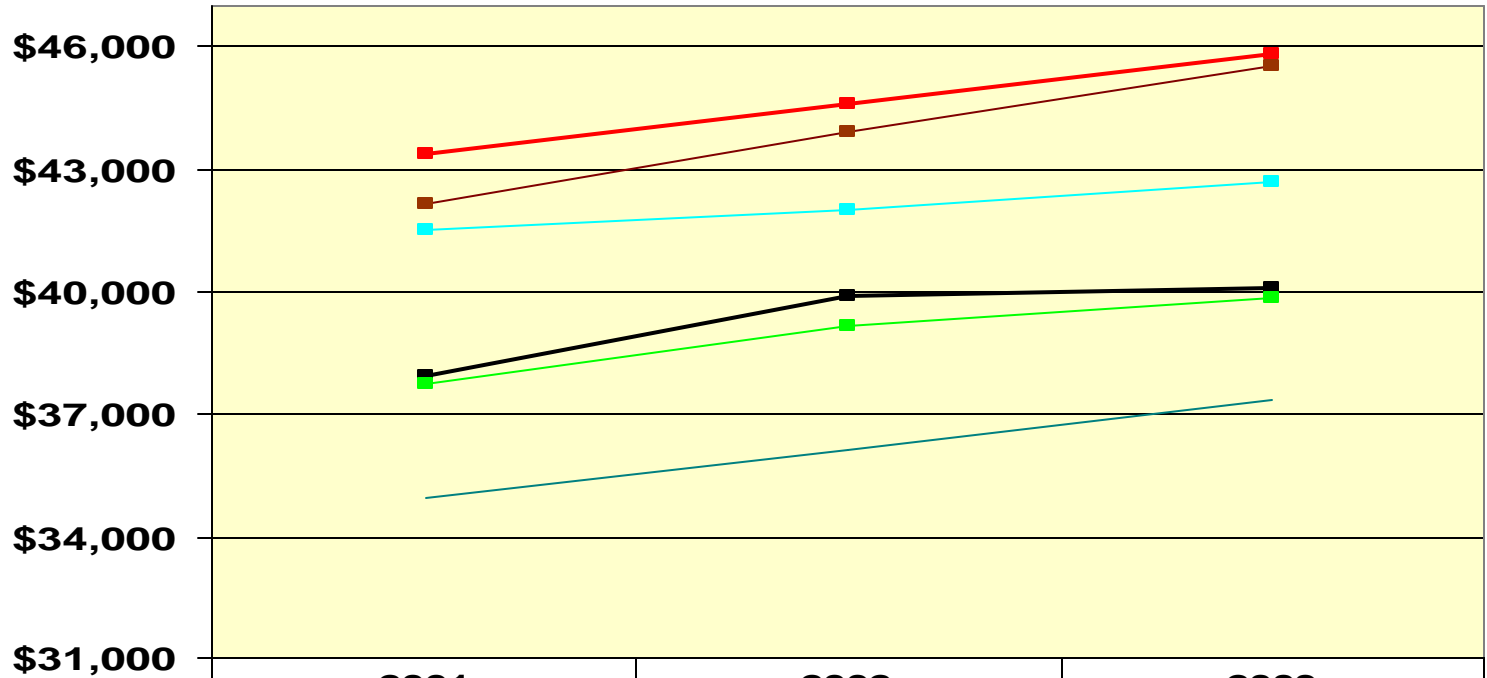


## High School Teachers by Percentile



# Teacher Salaries

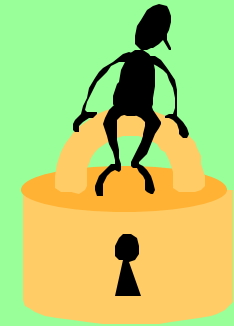
**Plaintiff Exhibit No.  
6612MM**



	2001	2002	2003
<span style="color: red;">■</span> National Average	\$43,400	\$44,604	\$45,822
<span style="color: brown;">■</span> GA Average	\$42,141	\$43,933	\$45,533
<span style="color: cyan;">■</span> NC Average	\$41,496	\$41,991	\$42,673
<span style="color: black;">■</span> SC Average	\$37,938	\$39,923	\$40,124
<span style="color: green;">■</span> Proviso Average	\$37,772	\$39,166	\$39,851
<span style="color: teal;">—</span> 8 Plaintiff Districts Average	\$34,966	\$36,137	\$37,378



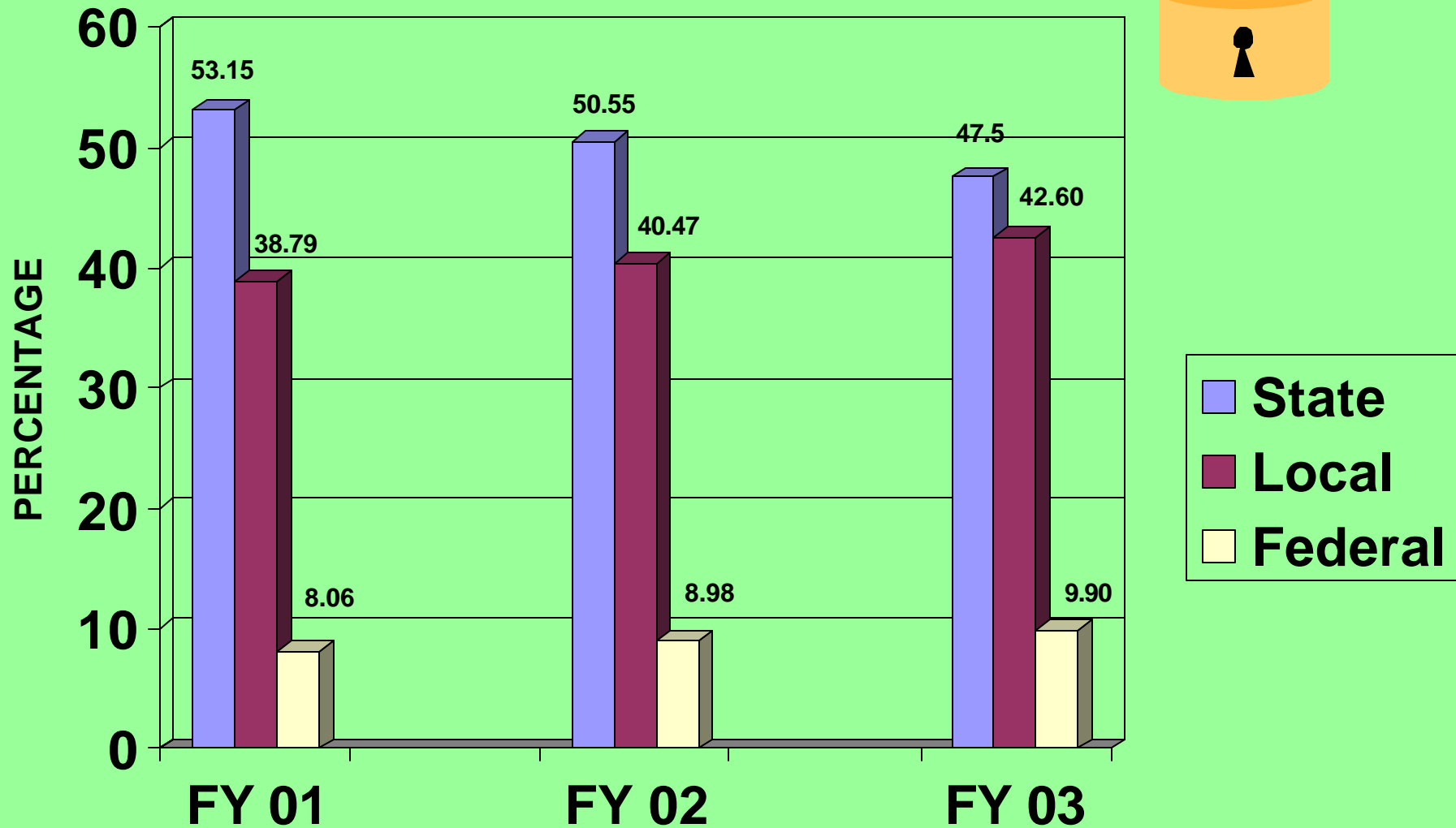
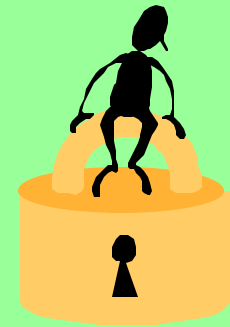
# Financial Information



## Percent Revenue State, Local, Federal Five Year Trend (expressed in millions)

	<b>Total State Revenue</b>	<b>Total Local Revenue</b>	<b>Total Federal Revenue</b>	<b>TOTAL</b>
FY 2002 – 2003	\$2,656	\$2,382	\$554	\$5,592
Percentage to Total	47.50%	42.60%	9.90%	100.00%
FY 2001 – 2002	\$2,763	\$2,212	\$491	\$5,466
Percentage to Total	50.55%	40.47%	8.98%	100.00%
FY 2000 – 2001	\$2,816	\$2,055	\$427	\$5,298
Percentage to Total	53.15%	38.79%	8.06%	100.00%

# Financial Information

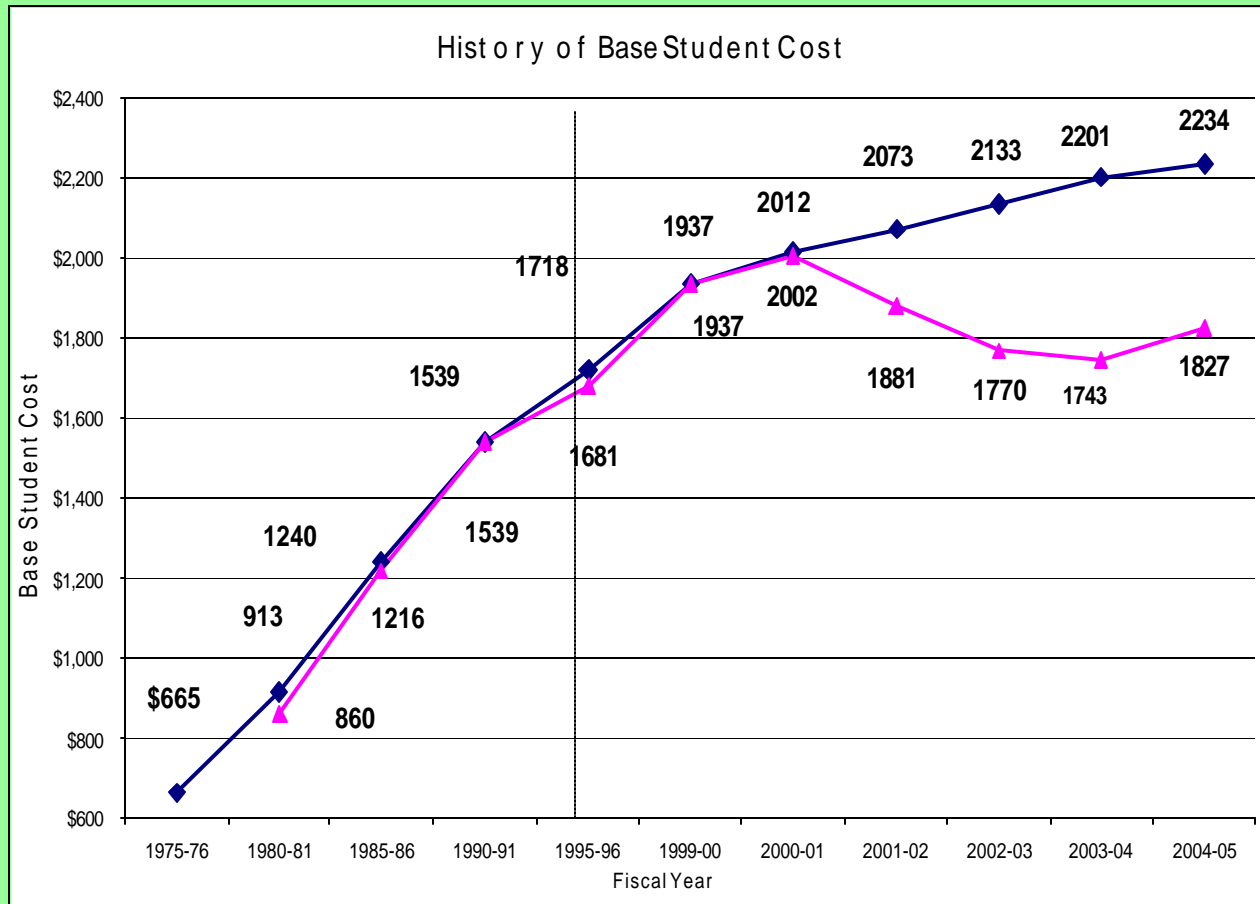


**Plaintiff Exhibit No.  
661200**

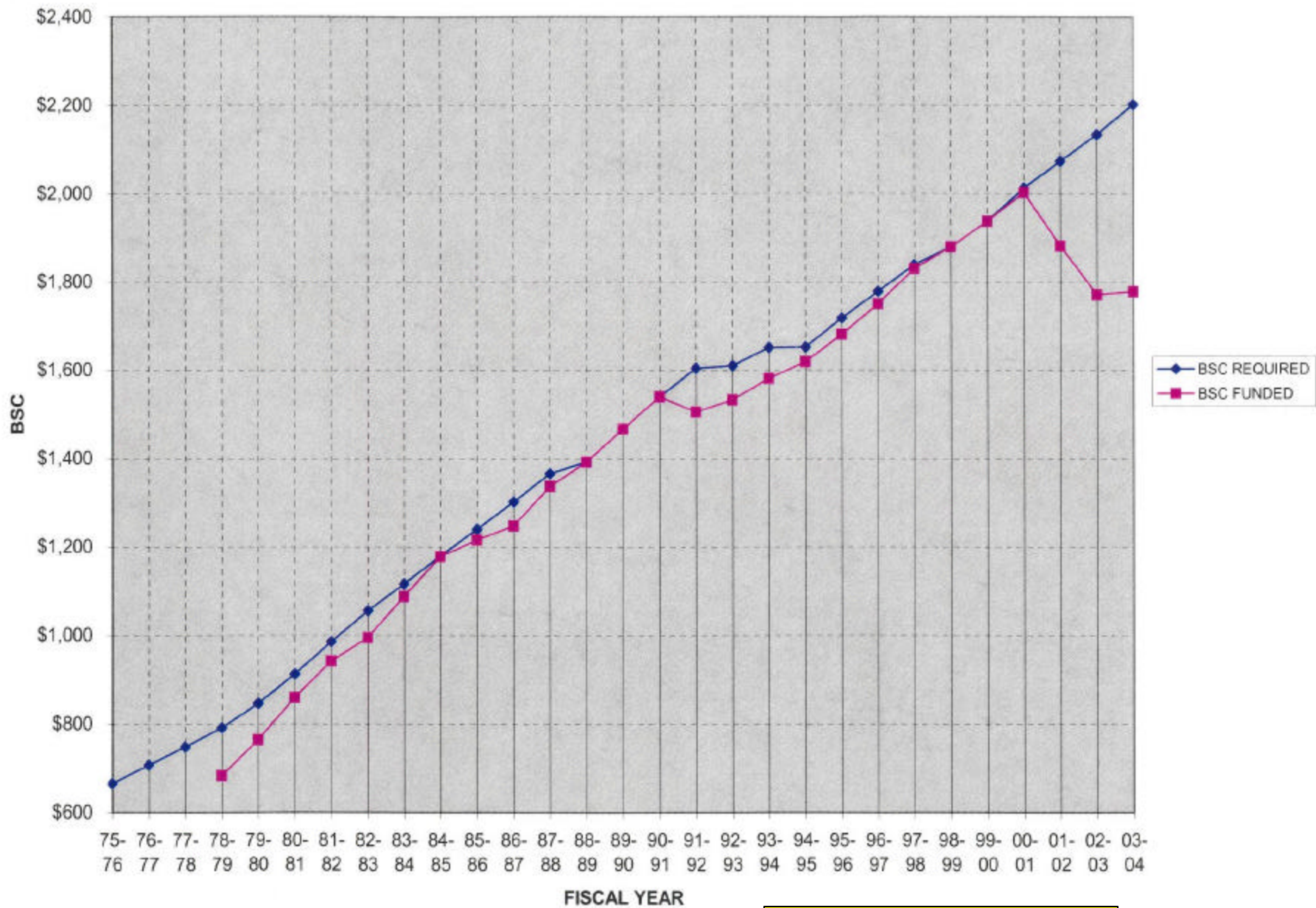
# The Base Student Cost

The BSC is the foundation of funding for public education in South Carolina.

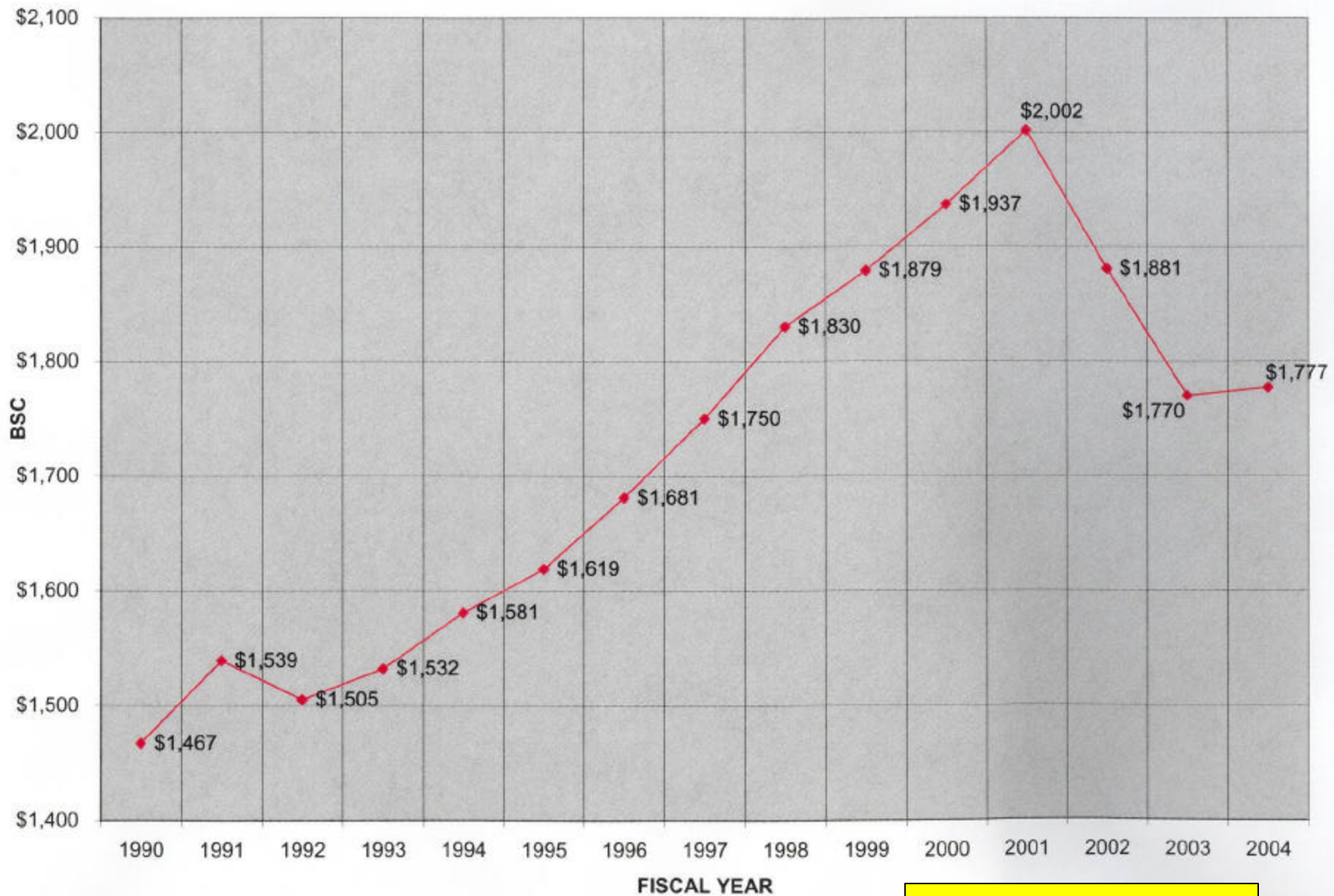
- \$1,743 per student BSC for 2003-4, funded at 1996-1997 levels
- \$2,234 -- BSC needed to meet inflation and enrollment increases
- Method of Calculating BSC from 1970's Statute



**Plaintiff Exhibit  
No. 6612PP**



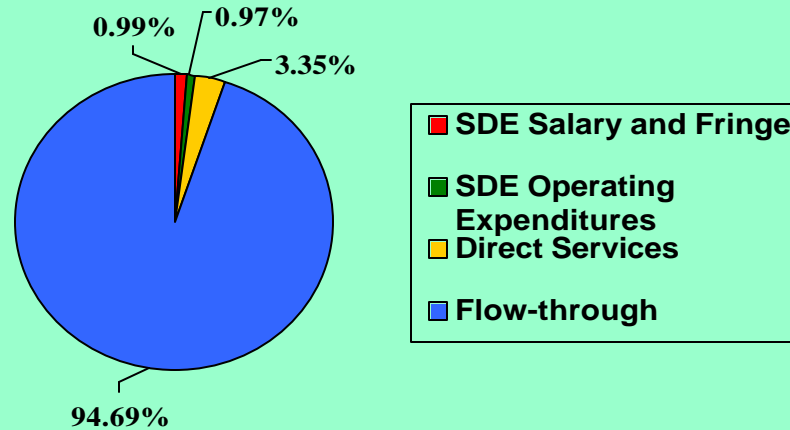
**Plaintiff Exhibit No.  
6612QQ**



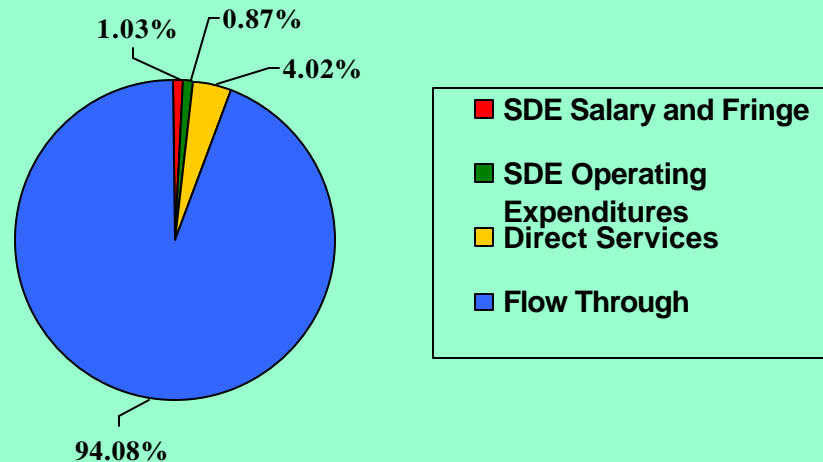
**Plaintiff Exhibit No.  
6612RR**

# Distribution of Education Funds

FY 2002



FY 2003



**Plaintiff Exhibit No.  
6612SS**

# BUDGET REQUEST

## DEPARTMENT OF EDUCATION

FISCAL YEAR	SDE REQUESTED INCREASE	SDE REQUESTED TOTAL	ACTUAL APPROPRIATION	DIFF
2004 - 2005	457.6M	2.792B	2.532B	(262)
2003 – 2004	337.9M	2.817B	2.472B	(345)
2002 - 2003	99.7M	2.655B	2.626B	(29)
2001 - 2002	345.6M	2.753B	2.568B	(185)
2000 - 2001	301.6M	2.533B	2.462B	(71)

# MID-YEAR BUDGET CUTS

## DEPARTMENT OF EDUCATION

2004

General Fund cut \$17.6M

EIA cut 13.3M

**Total cut \$30.9M**

2003

General Fund cut \$165.5M

EIA cut 16M

**Total cut \$181.5M**

2002

General Fund cut \$127M

EIA cut 33M

**Total cut \$160M**

2002

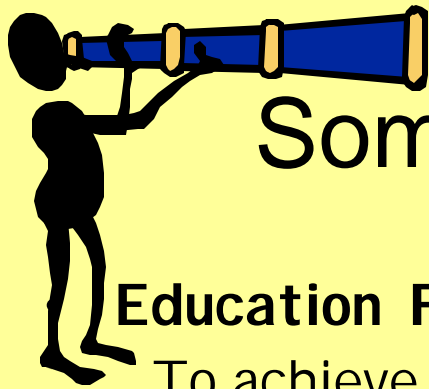
**18.6M Reduction**

**Over 4 Years**

**\$391M CUT**

**Plaintiff Exhibit No.  
6612UU**





# Some Projected needs for 2004-05

**Education Finance Act** **\$382 million**

To achieve the \$2,234 base student cost

- **Technology** **\$22.6 million**
- **Transportation** **\$71.6 million**

Buses and equipment, driver salaries, operations and workers' compensation

- **Data Collection and Analysis** **\$2.5 million**

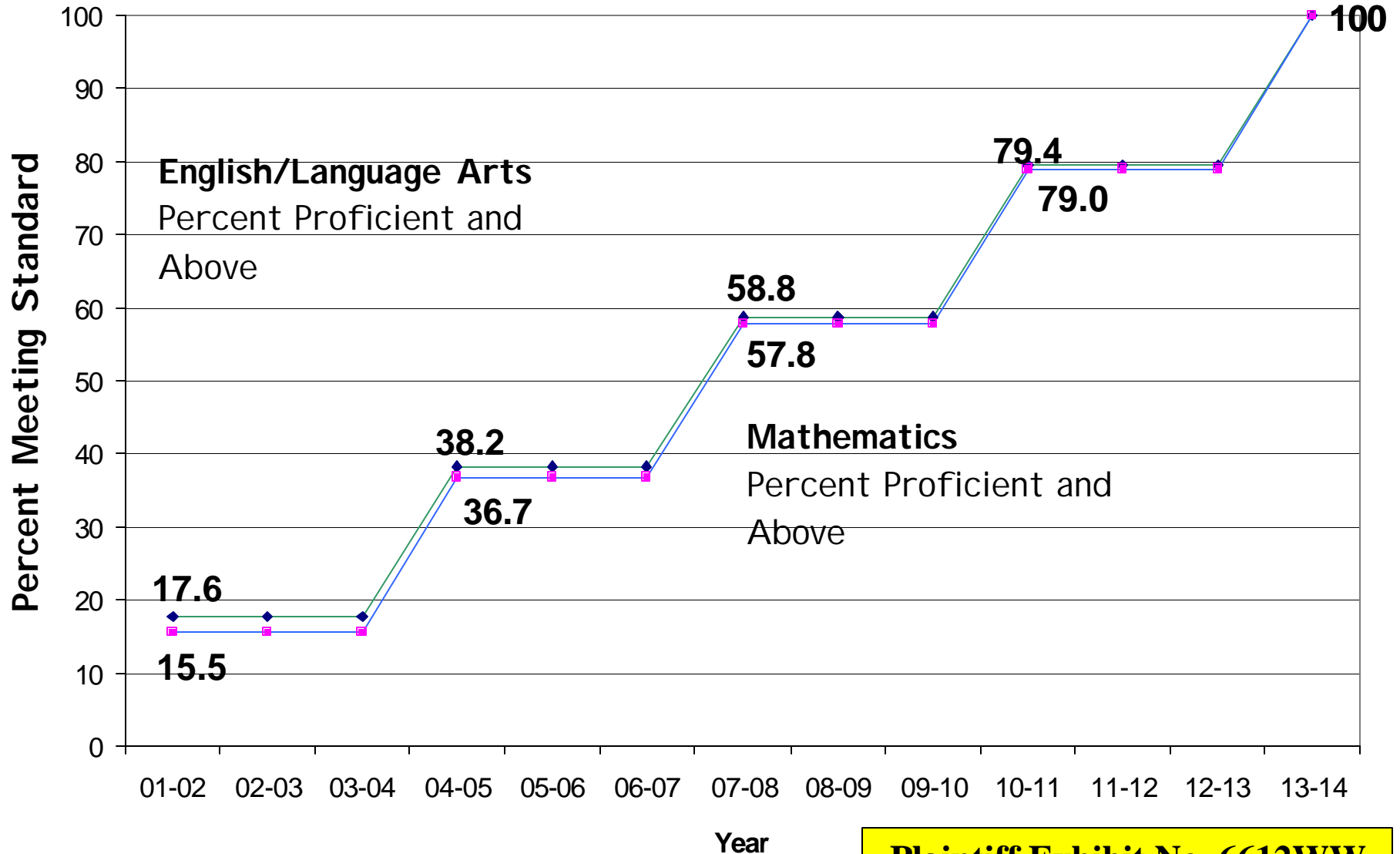
To comply with EAA and NCLB reporting requirements

- **Teacher Salaries** **\$147 million**

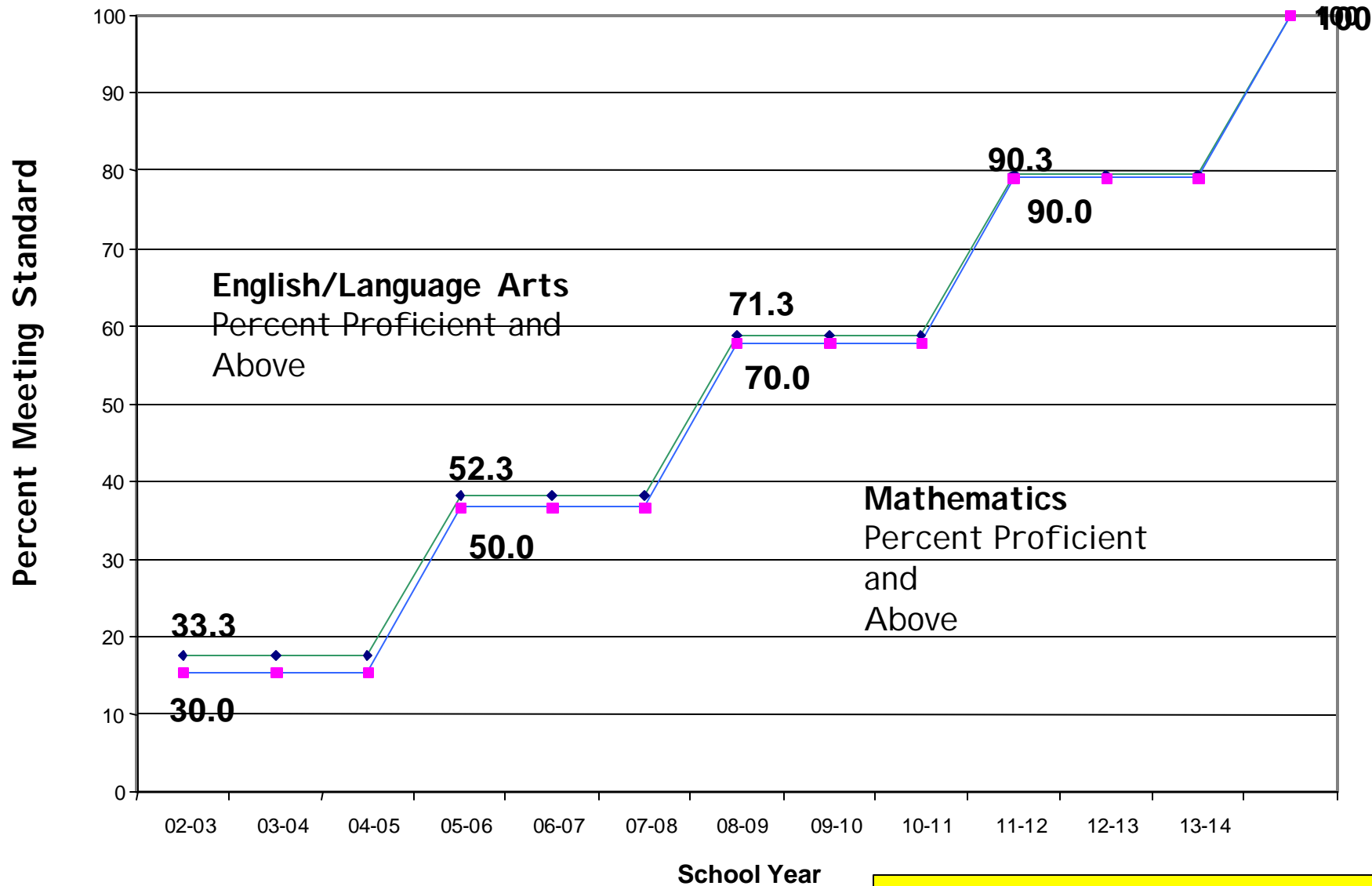
State share of the mandated teacher salary schedule shifted to districts when the BSC was reduced but the salary increase was not reduced

- **Instructional Materials** **\$18.6 million**
- **Early Childhood Education** **\$10 million**
- TOTAL** **\$653.3 million**

# Adequate Yearly Progress Objectives for Grades 3-8

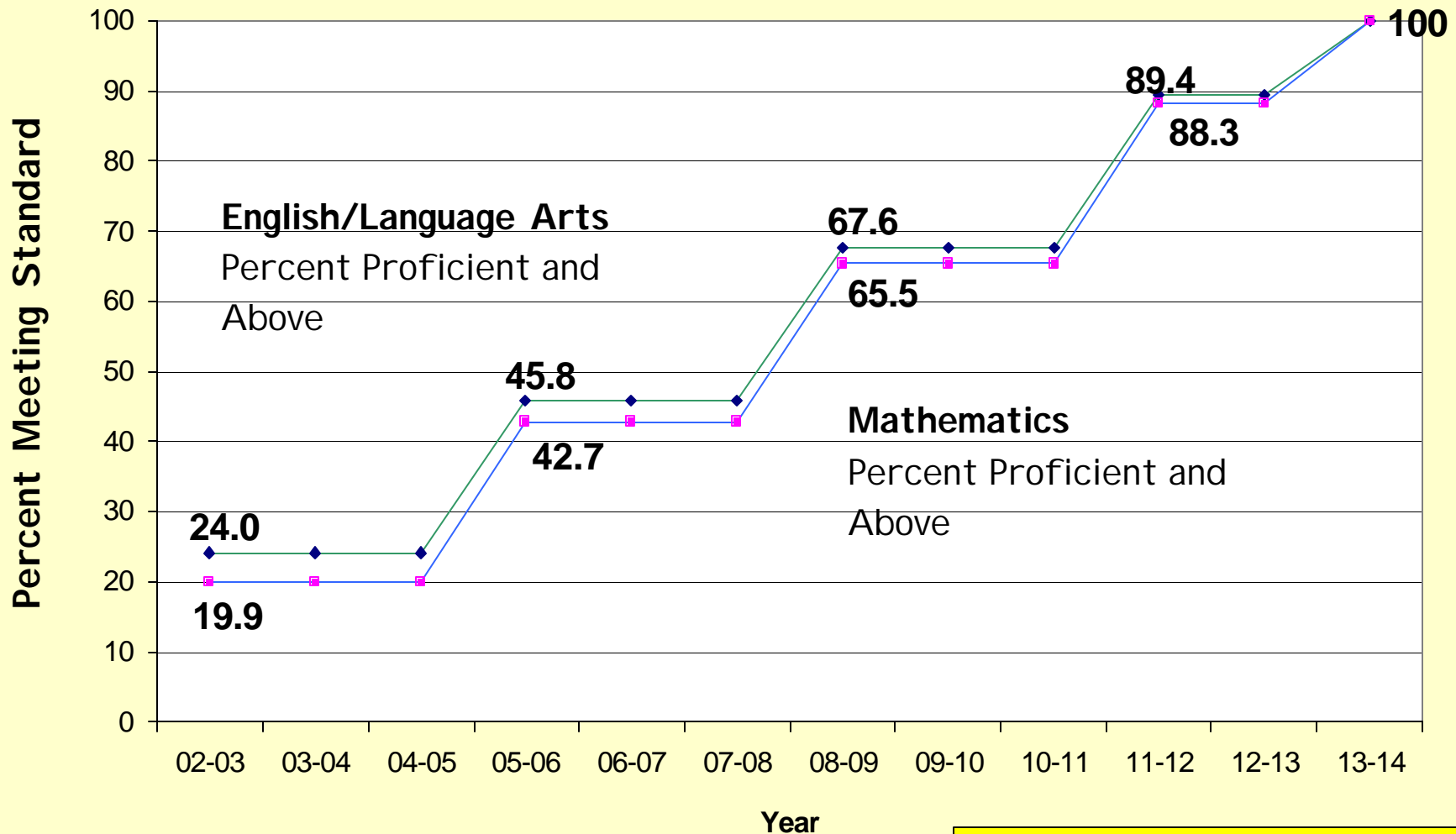


# Adequate Yearly Progress Objectives High Schools



**Plaintiff Exhibit No. 6612XX**

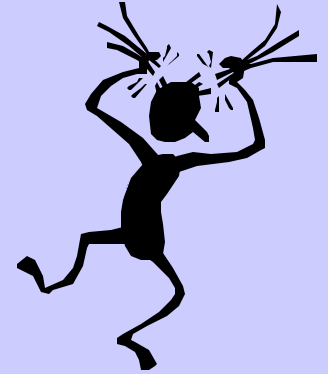
# ADEQUATE YEARLY PROGRESS OBJECTIVES FOR S.C. SCHOOL DISTRICTS



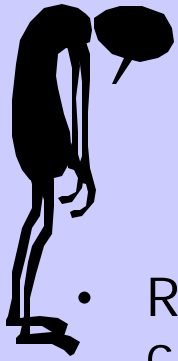
# NCLB - AYP Targets

Plaintiff Exhibit No. 6612ZZ											
AYP Groups	NCLB - AYP Tar get s										# Need to Meet For AYP
	Math		At Least 95% Tested		Lang. Arts		At Least 95% Tested		Other Indicator		
All Students	0		0		0		0		0	13	
White Students	0		0		0		0	N/A			
African-American	0		0		0		0				
Low Economic Status (free/reduced lunch recipients)	0		0		0		0				
Students with Disabilities	0		0		0		0				
Limited English Proficient	0		0		0		0				
Each Additional Ethnic Group	0		0		0		0			29+	

# Concerns and Issues



- Impact of adequate yearly progress (AYP) standards of NCLB on service needs
  - Based on each subgroup's performance
  - Percent performing **at or above proficient** in
    - \* Reading/language arts
    - \* Mathematics
  - At least 95 percent tested
  - Other indicators
    - graduation rate for high schools
    - attendance for elementary and middle schools

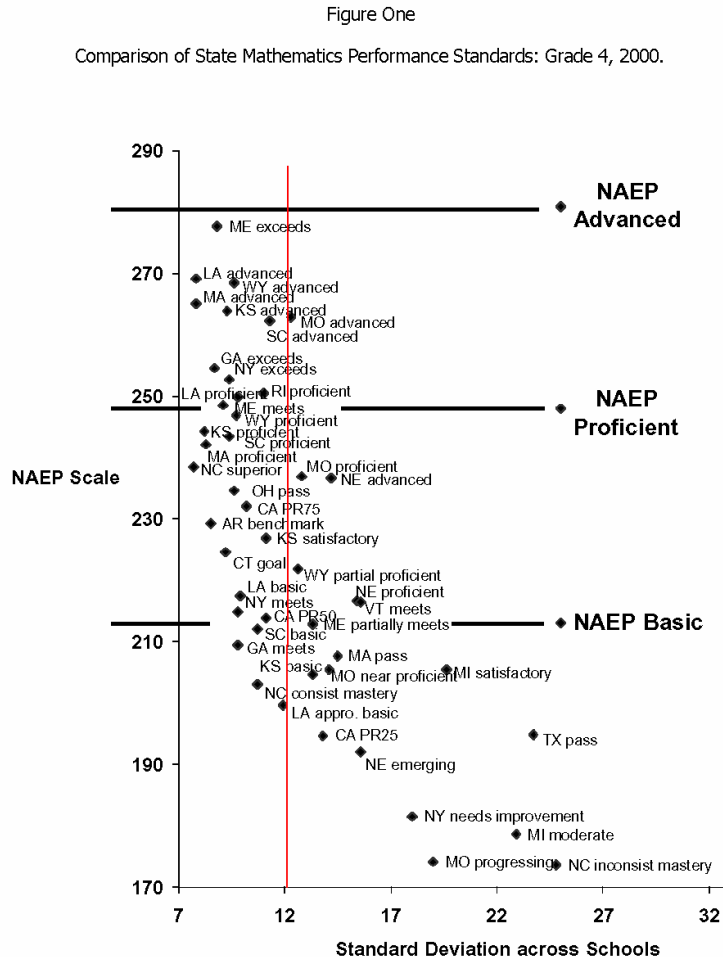


# Other Concerns and Issues

- Recruiting and retaining effective teachers for every classroom
- Need for services for all students to reach high expectations and performance criteria
- Greater-than-ever need for services for disabled, migrant, low-performing students
- Impact of growing LEP population and instructional needs
- The need for more up-to-date reporting (and analysis) and the impact of large data collection requirements and systems/personnel at local and state levels
- Impact of, and resources to meet, the federal requirements for teachers and paraprofessionals
- Lack of funds for construction and maintenance of school facilities

**Plaintiff Exhibit No.  
6612BBB**

# US Commission on Civil Rights



Source: American Institutes for Research, 2002.



# Matrix

## District Comparison – All Plaintiffs Districts to State of South Carolina

	State Average / Median	Alameda - District	Union 2 - District	Finney 4 - District	Hartman 2 - District	Jones - District	Lee - District	Math 7 - District	Orangeburg 3 - District
2001 Absolute Rating		Below Average	Above Average	Unsatisfactory	Unsatisfactory	Unsatisfactory	Unsatisfactory	N/A	Below Average
2002 Absolute Rating		Below Average	Below Average	Below Average	Unsatisfactory	Unsatisfactory	Below Average	Below Average	Below Average
2003 Absolute Rating		Unsatisfactory	Below Average	Below Average	Unsatisfactory	Unsatisfactory	Unsatisfactory	Below Average	Unsatisfactory
2001 Improvement Rating		Average	Below Average	Average	Average	Below Average	Below Average	N/A	Good
2002 Improvement Rating		Unsatisfactory	Below Average	Below Average	Below Average	Below Average	Average	N/A	Unsatisfactory
2003 Improvement Rating		Below Average	Unsatisfactory	Below Average	Below Average	Unsatisfactory	Unsatisfactory	Unsatisfactory	Average
Passed Exit Exam 2001		56.7%	74.50%	69.70%	45.50%	48.10%	46.80%	N/A	50.00%
10th grade passage of all 3 subtests									
Passed Exit Exam 2002	55%	37.1%	86.20%	49.20%	39.70%	41.30%	41.80%	50.90%	49.80%
10th grade passage of all 3 subtests									
Passed Exit Exam 2003	67.60%	39.0%	66.00%	32.80%	29.30%	36.30%	32.90%	67.90%	51.20%
10th grade passage of all 3 subtests									
SAT 2001	486V / 488M	418V / 411M	412V / 457M	401V / 406M	459V / 458M	386V / 383M	391V / 350M	N/A	394V / 400M
SAT 2002	488V / 489M	424V / 432M	426V / 463M	412V / 428M	467V / 453M	376V / 382M	396V / 350M	435V / 435M	383V / 401M
SAT 2003	460V / 456M	597V / 440M	432V / 454M	387V / 422M	409V / 400M	396V / 380M	431V / 448M	446V / 425M	421V / 414M
AP 2001 Take/Pass	40.00%	N/A / N/A	N/A	N/A / N/A	N/A / N/A	N/A / N/A	N/A / N/A	N/A / N/A	N/A / N/A
AP 2002 Take/Pass	50.30%	7.7% / 5.9%	63.0%	7.1% / 0.0%	8.4% / 0.0%	32.3% / 2.8%	5.2% / 0.0%	1.6% / 0.0%	5.2% / 0.0%
AP 2003 Take/Pass	56.60%	0.0% / 0.0%	3.7% / 0.0%	11.5% / 0.0%	2.0%	17.5% / N/A	8.8% / N/A	11.4% / 0.0%	9.1% / N/A
Gifted & Talented 2001****		N/A	6.0%	5.5%	1.6%	4.40%	2.50%	N/A	4.50%
Gifted & Talented 2002****		6.6%	5.9%	5.9%	N/A	4.30%	1.7%	4.0%	6.3%
Gifted & Talented 2003		3.8%	5.4%	5.8%	N/A	3.50%	2.3%	5.2%	6.9%
% Academic Plans 2001		N/A	N/A	N/A	68.0%	N/A	N/A	N/A	N/A
% Academic Plans 2002		N/A	N/A	N/A	70.0%	N/A	N/A	N/A	N/A
% Academic Plans 2003		N/A	N/A	N/A	59.4%	N/A	N/A	N/A	N/A
PACT Math Below Basic 2001		56%	63.0%	63.0%	55.0%	68.0%	69.0%	N/A	63.0%
PACT Math Below Basic 2002	31.80%	60%	46.0%	51.0%	67.0%	66.0%	61.0%	50.0%	52.0%
PACT Math Below Basic 2003	26.20%	49.5%	38.3%	48.5%	64.3%	54.5%	61.0%	53.3%	44.5%
PACT ELA Below Basic 2001		52%	44.0%	57.0%	65.0%	66.0%	66.0%	N/A	43.0%
PACT ELA Below Basic 2002	25.30%	50%	41.0%	54.0%	67.0%	63.0%	62.0%	44.0%	40.0%
PACT ELA Below Basic 2003	29.60%	67.1%	42.2%	50.4%	64.3%	63.2%	61.6%	54.7%	44.7%

\*\*\*\* Gifted & Talented 2001 / 2002 / 2003  
 Median Elem School 11.5% / 12.0% / 13.2%  
 Median Middle School 12.1% / 12.8% / 13.6%  
 Median High School 7.4% / 5.9% / 5.1%