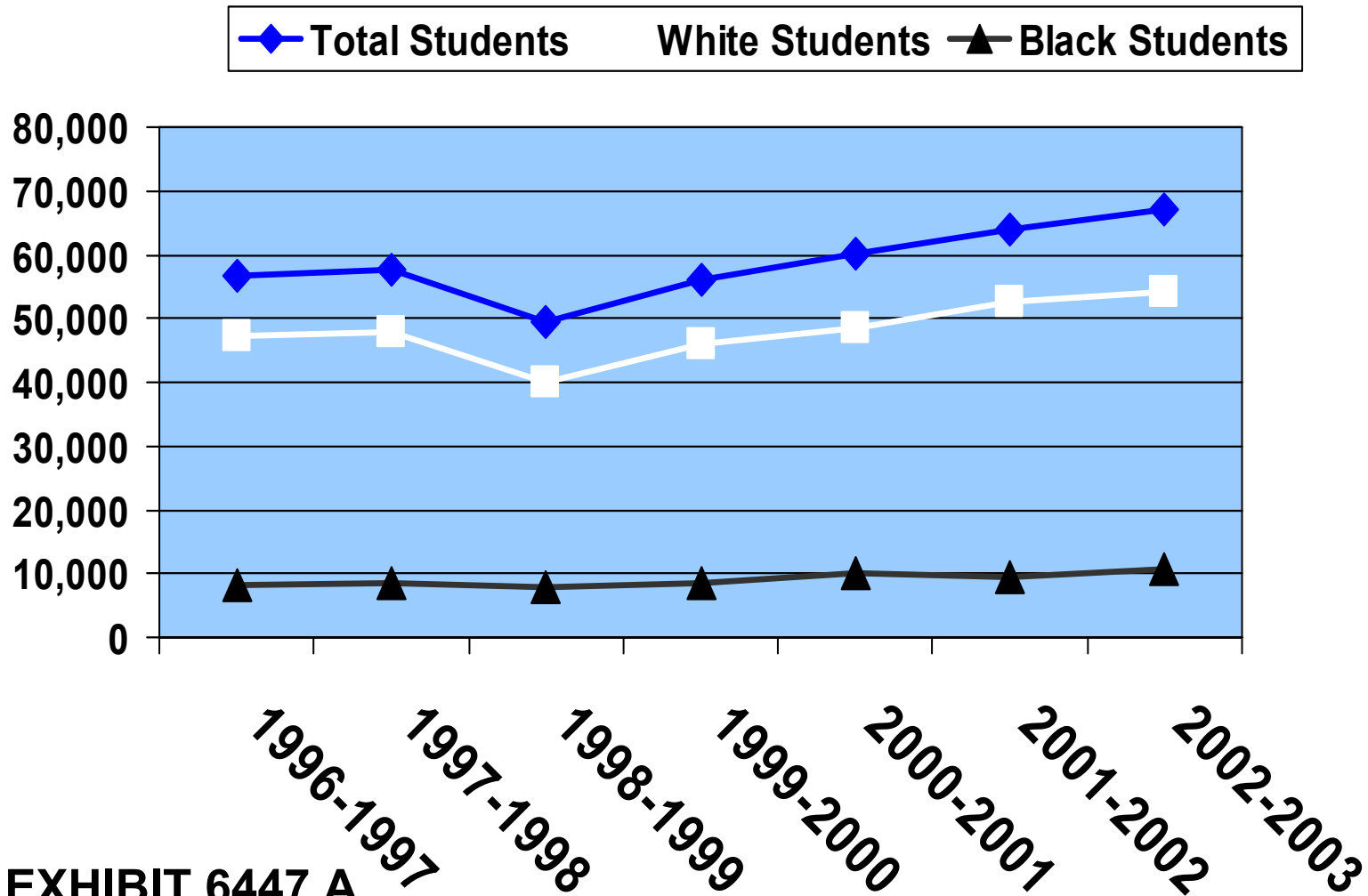
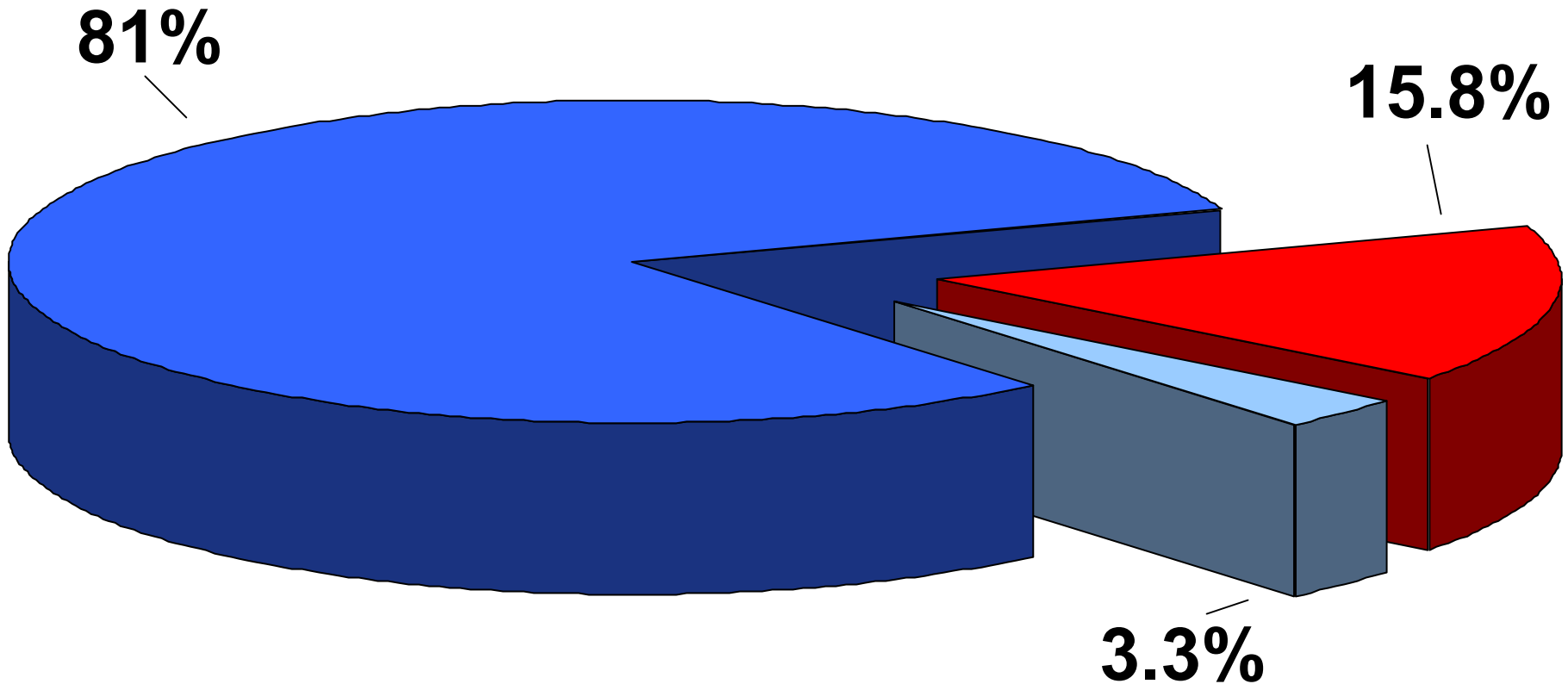


# Growth in Gifted & Talented Students: SC 1996/97-2002/03



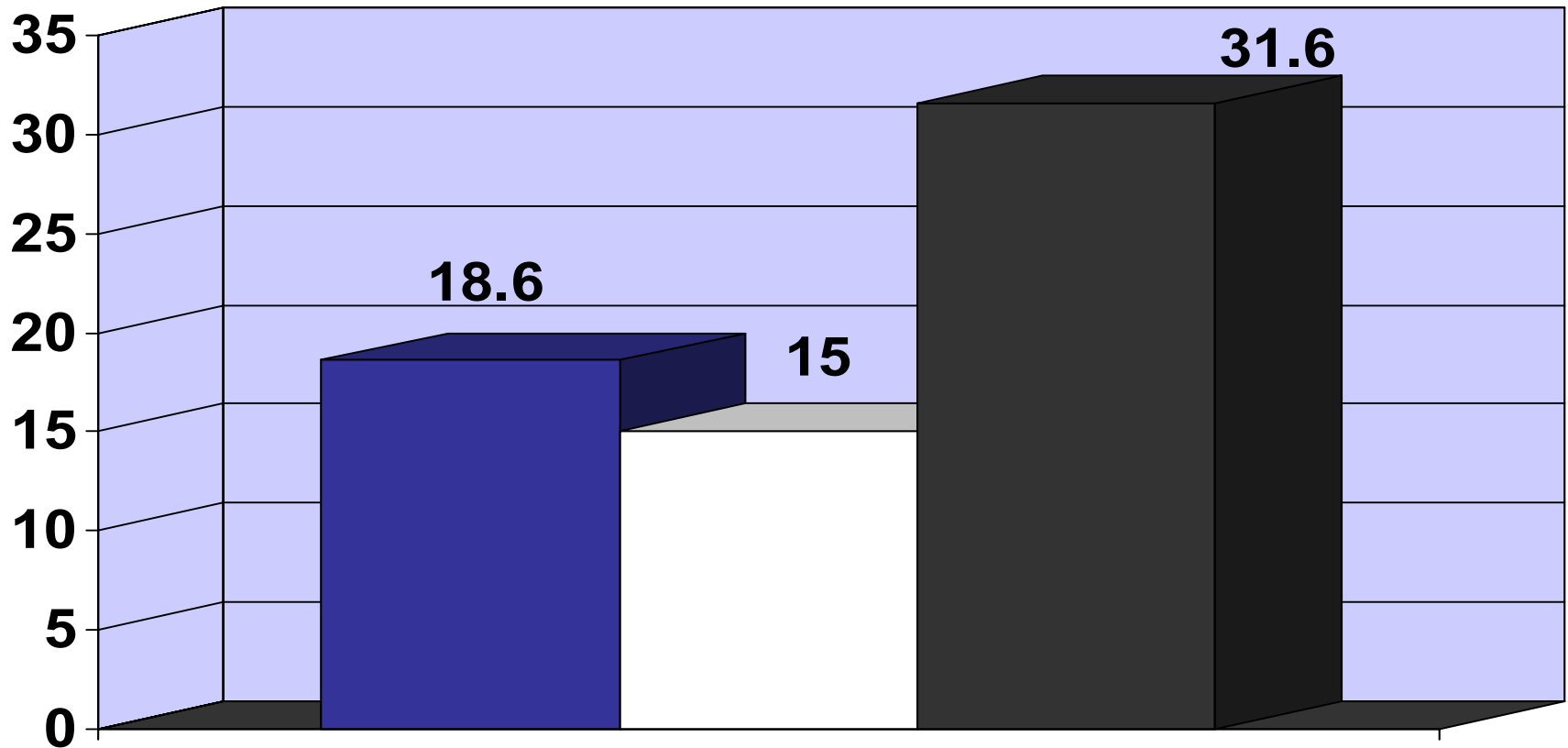
# Gifted & Talented: The Ethnic Story, 2002-2003

White Black Other



# Percentage Growth Gifted & Talented 1996-1997 to 2002-2003

■ Total Students    □ White    ■ Black

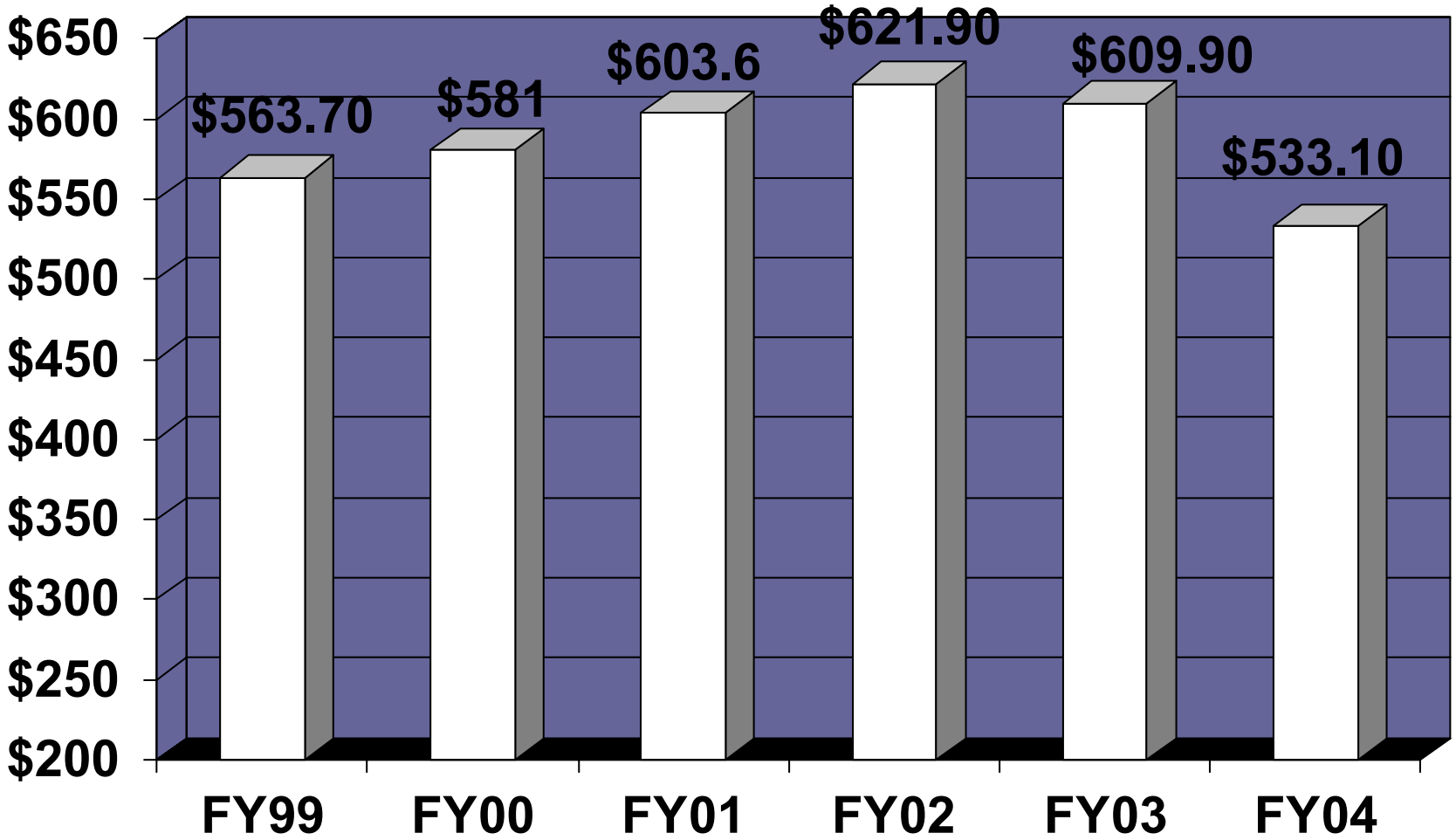


# Gifted & Talented 2<sup>nd</sup>-Graders

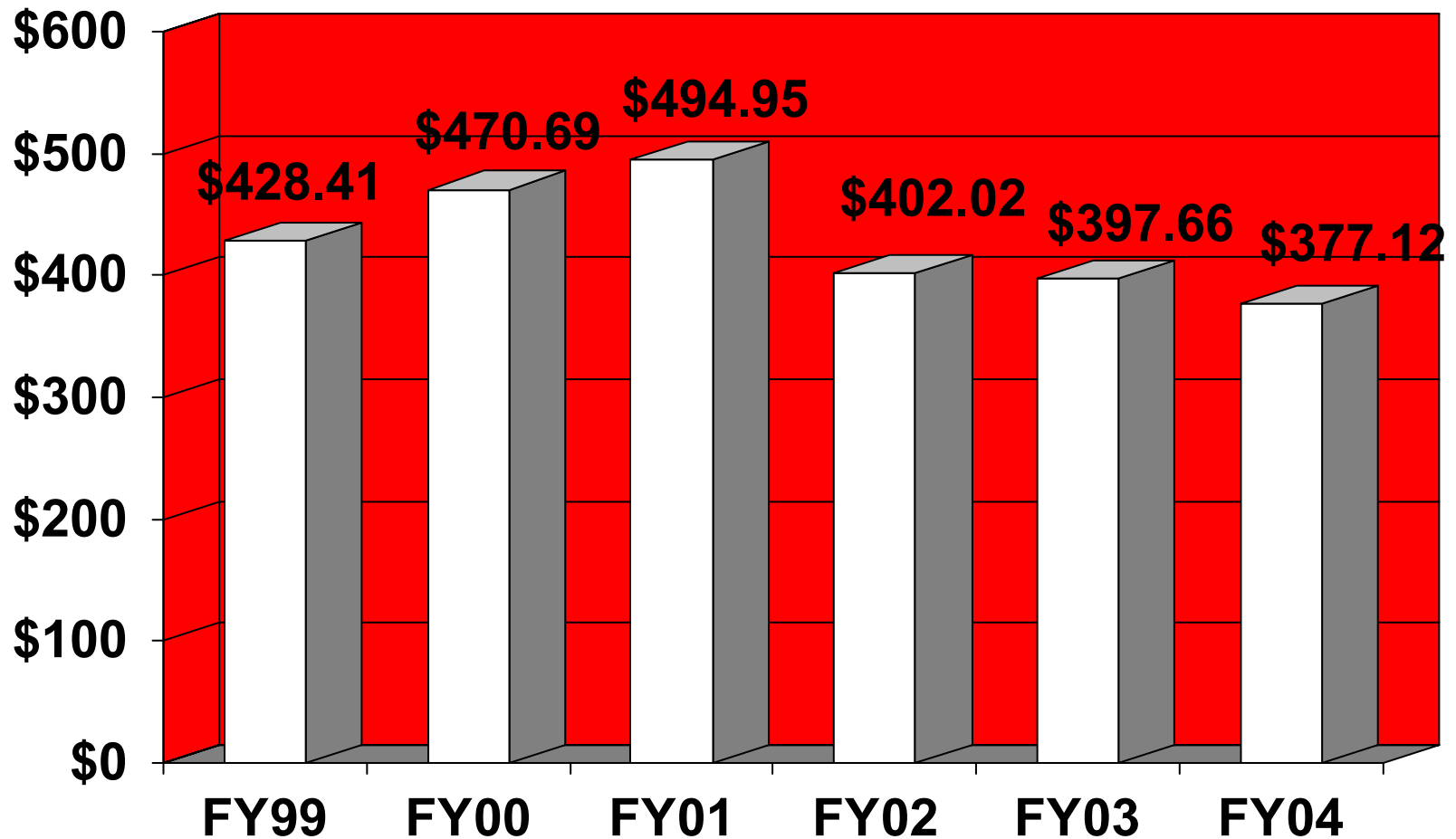
## Plaintiff Districts:

• Allendale	0
• Dillon 2	2
• Florence 4	0
• Hampton 2	0
• Jasper	1
• Lee	1
• Marion 7	0
• Orangeburg 3	0

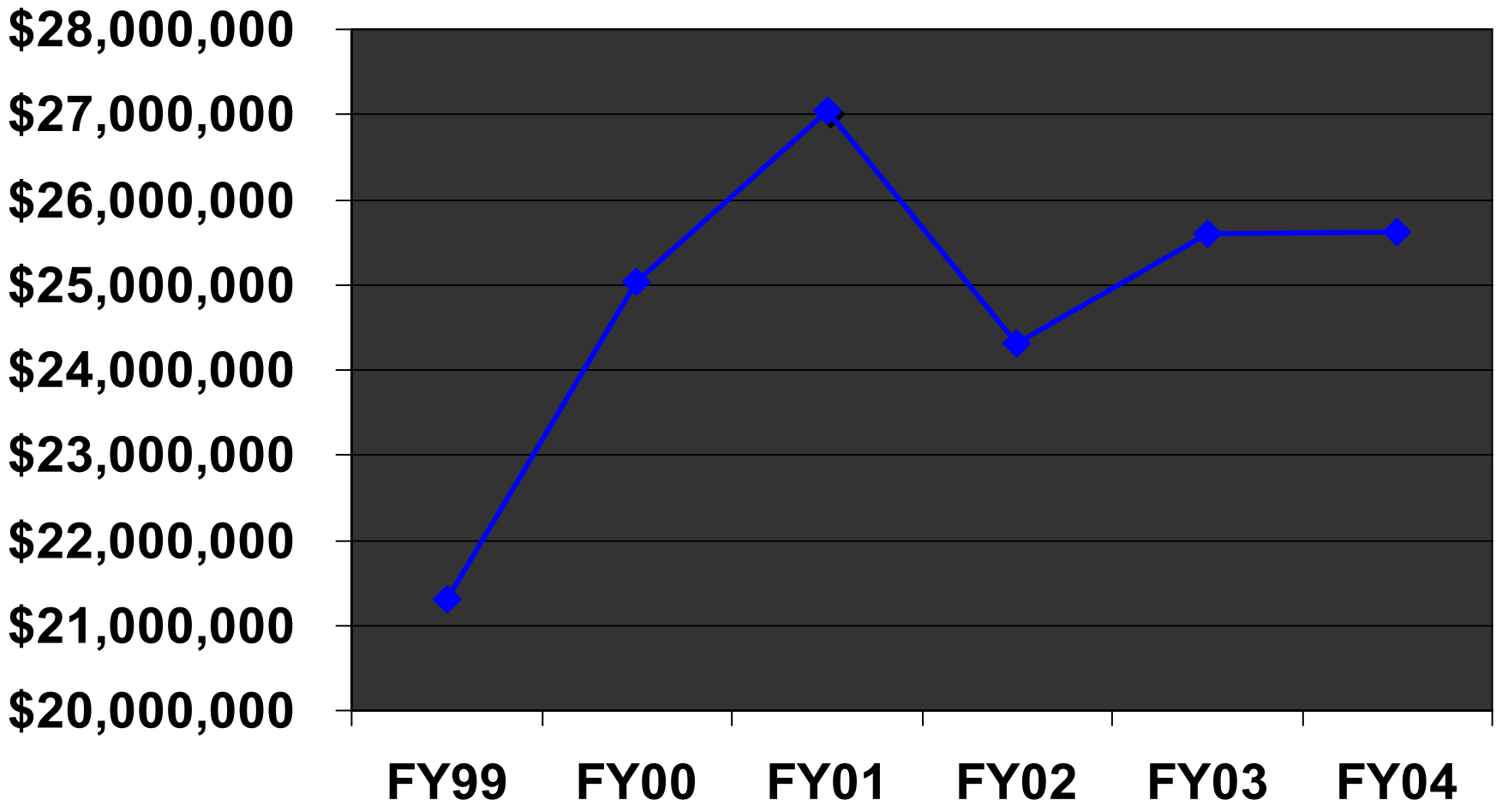
# What's a Gifted Education Worth? EFA Weighted Pupil Unit, FY99-04



# The Gifted Budget: Per Pupil Allocations, FY99- FY04



# Total State Funding Gifted & Talented SC FY99-FY04



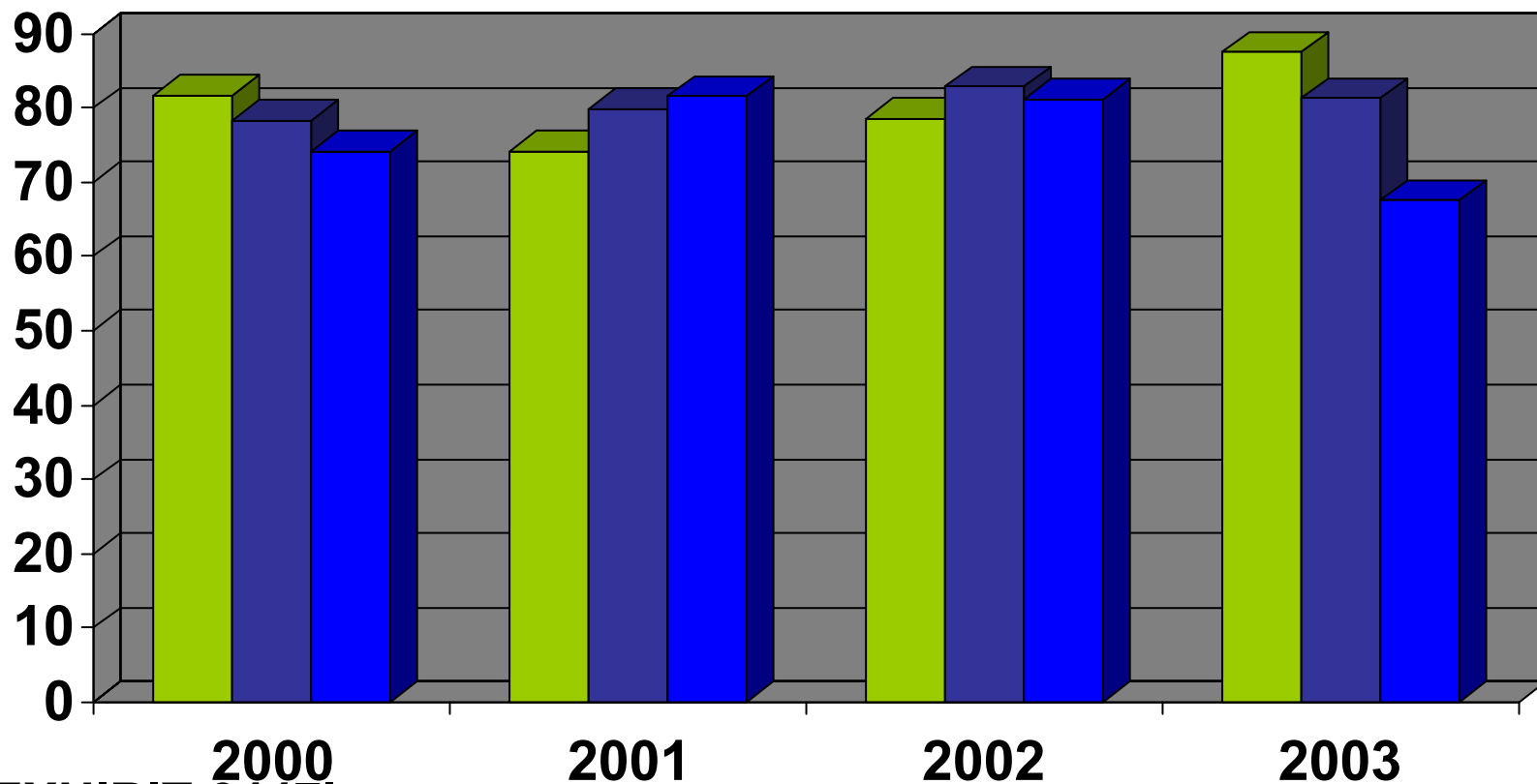
# Gifted & Talented: State Funds to PL Districts, 2004

• Allendale	\$24,890.20
• Dillon 2	\$50,911.77
• Florence 4	\$18,479.09
• Hampton 2	\$15,000.00
• Jasper	\$27,907.19
• Lee	\$20,741.83
• Marion 7	\$15,000.00
• Orangeburg 3	\$66,750.98



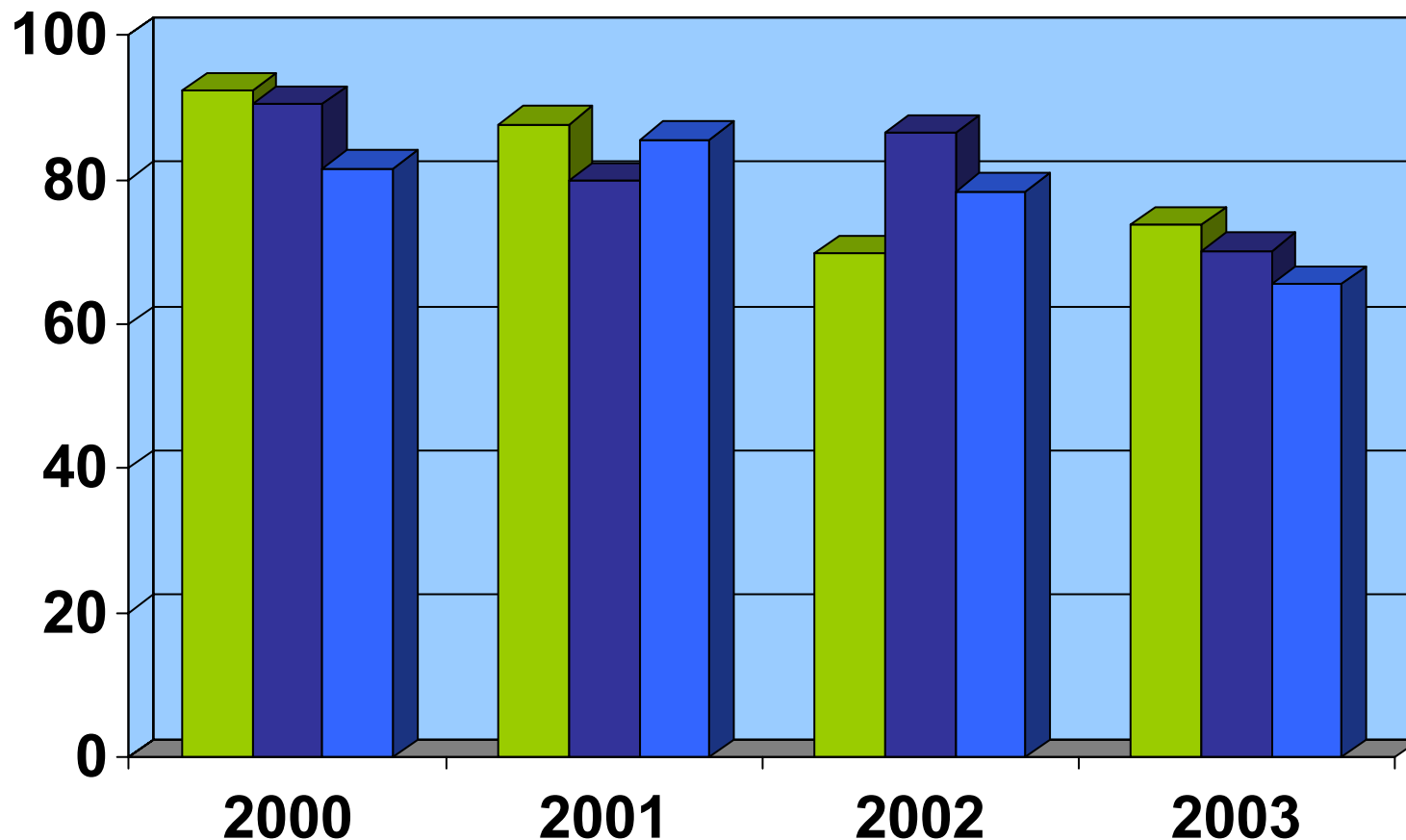
# Gifted & Talented: Longitudinal Prof/Adv PACT Math

■ Gr. 3 2000 Cohort ■ Gr. 4 2000 Cohort ■ Gr. 5 2000 Cohort



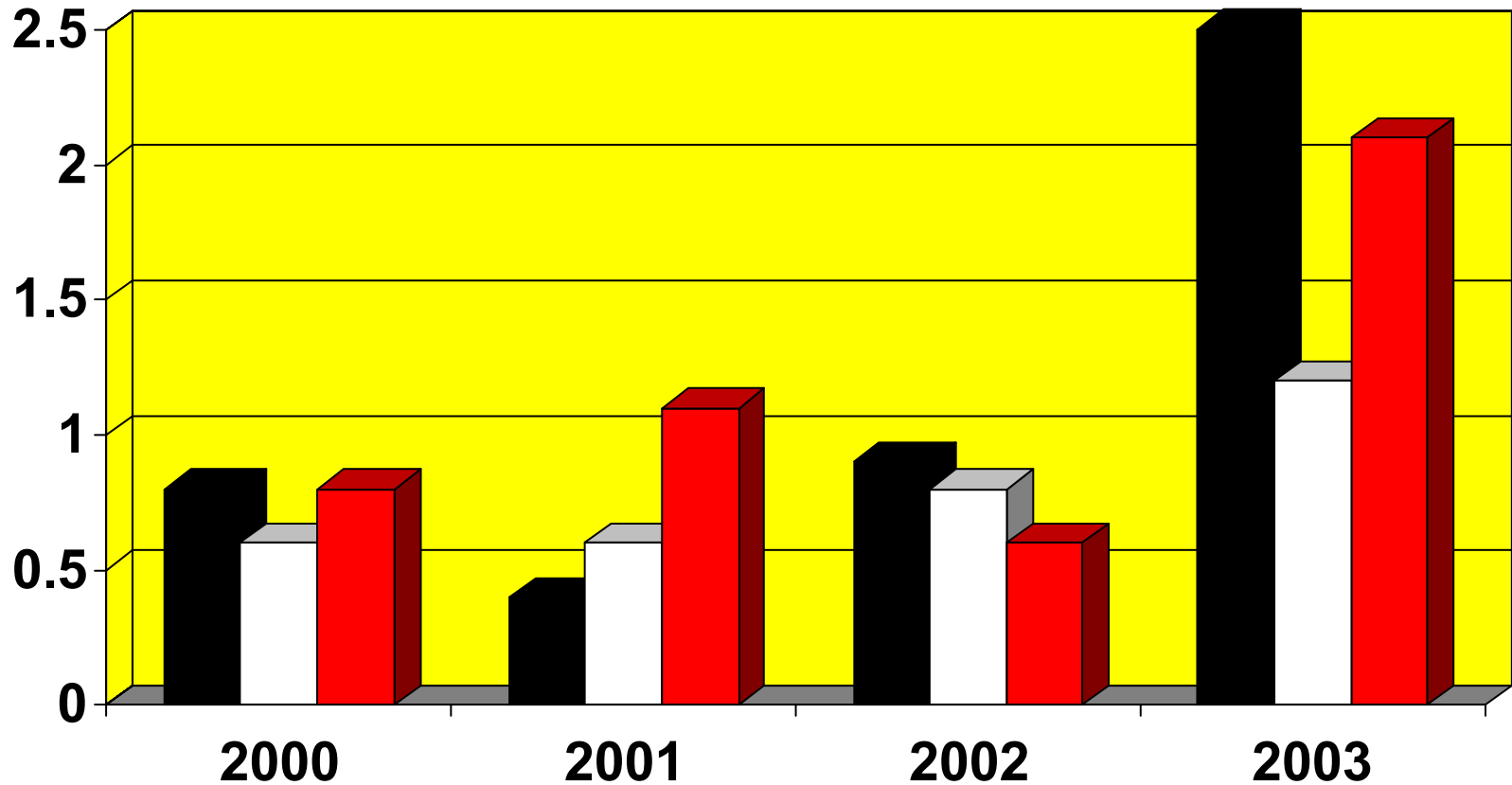
# Gifted & Talented: Longitudinal Prof/Adv PACT ELA

■ Gr. 3 2000 Cohort ■ Gr. 4 2000 Cohort ■ Gr. 5 2000 Cohort



# Gifted and Talented: PACT ELA Longitudinal Fall to Below Basic

■ Gr. 3 Cohort   □ Gr. 4 Cohort   ■ Gr. 5 Cohort



# Gifted & Talented: PACT Math Longitudinal Fall to Below Basic

■ Gr. 3 Cohort □ Gr. 4 Cohort ■ Gr. 5 Cohort

